



The Banyan  
I exist therefore I am

**ANNUAL REPORT 2003-2004**

# THE BANYAN

## ANNUAL REPORT

### 2003-2004

---

#### CONTENTS

##### Raising the Bar

- a. Milestones .....
- b. A time for evaluation and introspection .....

##### Fund raisers

##### Stories

##### Fact sheet

##### BoT

##### Org chart

##### Salary chart

##### Audit statement & balance sheet



## Raising the Bar

With every passing year the stakes get higher. We reach out to more women. More women go back home to attempt living full lives in their families and their communities. More women are succeeding, many are failing. We see more stories of hope as well as of despair.

And every year, as always, The Banyan rises to the new challenges - raising the bar, finding new strength, leveraging existing resources, pushing our limits beyond what was earlier thought possible.

We need to keep up with the growing need. Today, close to 400 women are housed in our shelter. On average 30 women enter Adaikalam every month and over half go home.

The Banyan completed a decade of existence in 2003. There was a great spurt in the number of women needing our shelter and care. As many as 345 women were admitted and 243 were restored to their families between March 2003 and February 2004.

The reality that the ever-increasing demand was outstripping our limited financial, spatial and manpower resources hit us harder than ever before. Clearly, it was not a moment for resting on one's laurels. It was time, we realised, for evaluation and introspection; for review and consolidation; time to count our gains and assess our shortcomings.

To intensify efforts, to augment our resources, to work towards financial and operational stability. To look beyond the anthology of nearly 600 tales of success and find out if the stories stuck to their happy endings or strayed into a world of harsher realities. And to forge a strategy for strengthening our intervention by improving our care and rehabilitation model and by getting the government and other stakeholders to get more involved. We have done all of this in various ways, none of which have been easy. More remains to be done.

In the year ahead, our focus is on raising the number of stakeholders in the arena of mental health and homelessness. Towards this we are actively lobbying with government and non-government bodies. In all of this the community, that has always been our core strength, is expected to play a large part. That's people like you. Thank you for being there.

Vandana & Vaishnavi

# MILESTONES

## One Year of the Legal Aid Clinic

The cases of The Banyan 's Legal Aid Clinic are handled by advocate Ms. Shanthakumari, who visits The Banyan twice a month. Cases connected with the safeguarding of the rights of the mentally ill, have been referred to the Tamil Nadu State Legal Authority directly. Cases from the state of Karnataka and Tamil Nadu have been handled to date. Instances of difficult rehabilitations, in which family and community support has not been forthcoming, have been made smoother, thanks to the presence of a representative from the Legal Aid Clinic.

The Banyan model of ensuring legal rights to the mentally ill has been recognized and appreciated.

Dr. Jim Crowe, president of the World Fellowship for Schizophrenia and Allied Disorders, has remarked that in his view, this is a one of its kind service.

On October 29th, 2003, The Banyan's Legal Aid Clinic celebrated its first anniversary with a function at the Madras High Court. Chief Justice B. Subashan Reddy, Justice R. Jayasimha Babu , Justice V.S. Sirpurkar and the United States Consul-General in Chennai, Dr. Richard Haynes, took part in this celebration of what has truly been one year of providing hope to a section of women who have been neglected for far too long.

# National Consultation On The Biwako Millennium Framework, New Delhi India



The Banyan was an active part of the Asia Pacific Decade of Disabled Persons, 2003-2012, National Consultation on the Biwako Millennium Framework conducted in New Delhi from October 9th-10th, 2003.

A decade and a half after the Mental Health Act of 1987 and eight years after the historic People With Disabilities Act [PWD Act] of 1995 which for the first time brought within the ambit of the disabled, people with mental illness, the voice of the mentally disabled was heard in the corridors of power at New Delhi. At the National Consultation, The Banyan drew the attention of policy makers to the plight of one of the most marginalized groups among the disabled - the mentally ill, homeless women. Among the recommendations made by The Banyan and accepted by the Ministry of Social Justice and Empowerment which convened the session with the help of the National Trust, were the following:

That as a matter of urgency NIGHT SHELTERS in the form of existing school buildings and government offices with lighting and security be thrown open at night to destitute women to prevent the horrific physical and sexual abuse they suffer on the streets at night. This will also enable early rescue of these women by NGOs working in this area.

That the Centre direct the National Commissioner for Disabilities and the State Commissioners for Disability to implement the PWD Act and use the Indian Disability Evaluation and Assessment Scale developed by the Indian Psychiatric Society to certify mental disability among the mentally ill. This will assure access to Disability Benefits such as Disability Pension and Concessional Railway Travel, to these persons who have been denied these basic rights though they have been eligible for it for about a decade now under the PWD Act. A stark example: -- The Banyan which finally reunites and restores mentally ill, destitute women in our care to their families across the length and breadth of India is unable to get even a Railway Concession for the women because there has been no proper implementation of the PWD Act and the IDEAS Scale to issue a Disability Certificate to these women.

The National Institute of Mental Health and Neurological Sciences [NIMHANS] has, after an in-depth study of The Banyan, recommended that Banyan-like centres be set up in every district of the country to address the problem of destitute, mentally ill women. The uniqueness of the Banyan lies in the fact that it has been able to mobilize available community resources to achieve what was considered impossible.

For example, India has for her billion population only around 3000 psychiatrists; and nurses trained in psychiatric care are equally few. The Banyan surmounted this problem by inviting young rural women who were so inclined, to come and help at the Banyan. After a trial period, if they liked it, they stayed on. They thus mastered the art of street rescue, pacifying the women, caring for them, getting a court order for treatment, reporting to the psychiatrist who assessed the case and began treatment, documenting details, giving medicines, helping with vocational training, building self-confidence in the residents and finally travelling across India to reunite these women with their families on rehabilitation trips. Over a hundred such Psychiatric Care Givers have been trained by The Banyan in the past decade.

In a sense The Banyan has been able to do a double; i.e., reunite and rehabilitate over 600 women with their families ensuring continued treatment [medicines are sent by post or dispensed at the Out-Patient Clinic] and more importantly, prove that a cadre of competent Psychiatric Care Givers can be raised from among young rural women and that even the problem of destitute mentally ill women CAN be tackled successfully.

Today, these village women are also the fulcrum for spreading awareness about mental health in the villages and in ensuring help to the mentally ill in the community. These rural women view this opportunity as a boon; for otherwise they would have only ended up as labourers or housemaids or at best worked in the 'garment export' sector, all of which are in the irregular, low income, sector. In contrast, this training has given them gainful employment and above all, recognition and self confidence thanks to the hands-on training they get along with the chance to travel across the country. This cadre will have to be replicated if more such Rescue - Treatment - Rehab centers are to be started; and The Banyan is ready to be a Resource and Training centre for the same.

## Government networking

A very constructive meeting with top officials of the Tamil Nadu government concerned with Health, Ms Sheela Rani Chunkath and Ms Supriya Sahu, was a step forward in our networking efforts with the government.

Positive outcomes of the meeting included the interest shown in strengthening the District Mental Health Plan to make psychiatric care more easily available in villages and the request that The Banyan, along with NIMHANS, develop mental health training programmes for government medical staff. A host of other issues were also taken aboard during the meeting, making us very optimistic that the battle to strengthen mental health services in the state was going somewhere.

mobilize available community resources to achieve what was considered impossible.

## Urban Community Clinic



19th oct 2003 saw the inauguration of the Urban Psychiatric Mental Health Clinic, to reach out and cater to the needs of those who are unable to access and afford psychiatric care. Existing community-based care are not adequate and the gulf between general health services and mental health services aggravates problems faced by those suffering from mental disorders, particularly vulnerable groups like women, children and adolescents. Realising this, The Banyan in association with the Social Work Department of Loyola College, Chennai, and two other non-government entities, Ecomwell and Udavi, has tried to augment the available mental health resources in the city by setting up this clinic. It will function as a free weekly outpatient service open to all. Awareness on the issue of mental illness will simultaneously be spread through the community with film screenings and street theatre performances.

## Cupshup

The month of May saw the beginning of another new venture at The Banyan, "Cupshup", a canteen run by residents that within a week of its existence became an indispensable part of The Banyan. Coffee, tea and bottled drinks served with a smile by residents are popular among the entire family here at The Banyan. Visitors to The Banyan are similarly impressed by the efficient service, and the ample marketing skills displayed by the entire Cupshup Team. A special place to treat friends or indulge oneself after working at the Vocational Training Unit, Cupshup is a big favourite among residents.

## Redefining Space

We have already adverted to the high rate of admissions that touched almost seven a week. The rising numbers and the constant pressure on space in a building meant to accommodate 200 forced us to take drastic measures. We have relocated the office to the ground floor, squeezing ourselves into the lobby and reception area. The vacated space has been converted into dormitories for our residents. Much of the first floor and ground floor had to be redesigned to facilitate the changes.

## A Decade of Achievement - The Banyan Turns Ten!

The Banyan celebrated its 10th Anniversary on August 27th, 2003. Apart from an evening of celebration involving supporters from all walks of life, volunteers and residents, a One-Day Conference on Interventions in the Mental Health Sector was conducted at The Banyan.

Perspectives of the government, NGOs, funding agencies and mental health practitioners in the field of mental health were shared in the highly interactive one-day session. Bringing together professionals, students, NGOs, government officials and funding agencies, the conference not only brought together stakeholders but reinforced the need for increased co-operation in this sector.

Speakers for the day included Ms. C.K Gariyali, the Social Welfare Secretary for Tamil Nadu, Mr. Harsh Mander, Country Director, ActionAid India, Ms. Ali King of Zurich Financial Services, Ms. Varthika Jaini of the Sir Ratan Tata Trust, Dr. Ponnudurai, Director, Institute of Mental Health,

Chennai, and Dr. Kishore and Dr.Sekhar of NIMHANS. The one-day conference provided a platform for sharing and exploring the possibilities of working closer with other organizations in the field on mental illness.

The Banyan's 10th Anniversary function was not only a day to celebrate the past ten years of achievement, but one for reaffirming its commitment in the days to come. Friends and supporters filled the Central Leather Research Institute Auditorium in Chennai to capacity for an evening of remembering and rededication towards the cause. Ms. B. Valarmathi, Minister for Social Welfare, Government of Tamil Nadu, was the special guest for the evening and spoke with pride of the success of The Banyan model of care and rehabilitation and the importance of replicating this model. Many organizations committed themselves to supporting The Banyan's follow-up activity that now extended to 14 Indian states.

## World Mental Health Day 2003

Every year, the world over, October 10 is set aside to help spread awareness and understanding of the issue of mental illness, observed as World Mental Health Day. This is a day for showing support to those living with mental illness.

On October 9th, 2003 The Banyan conducted a very special awareness programme and signature campaign at Spencer's Plaza Atrium, Chennai. Hundreds of people came forward to sensitize themselves on the issue of mental illness. That mental illness can happen to anyone, that mental illness is treatable, and that discrimination and the stigma against those living with mental illness has to come to an end, was the message of the day.

Highlights of the evening included the presence of film actor Vivek Oberoi, who had come down from Mumbai for the programme. Mr. Oberoi reiterated his commitment to the cause of those living with mental illness and described the work being done by The Banyan as miraculous. He later visited The Banyan and spent time with the residents as well, all of whom were delighted to have him spend time with them.



# A TIME FOR EVALUATION & INTROSPECTION

## Zurich Financial Services - Risk Analysis

Zurich Financial Services (ZFS), based in the United Kingdom, and The Banyan stepped up their cooperation this year, both in terms of funding support and planning the organisation's systems of operation. The highlights of Zurich's involvement were an extremely beneficial exercise in July 2003 in planning and introspection with Mr. David Chester, a Zurich representative, and an agreement under which ZFS will help capacity building within The Banyan.

ZFS helped identify key areas of our operation process -- Care, Finance and Administration, Networking and Advocacy and Follow-up -- and evolve action plans in each of these areas.

Mapping out future risk areas and planning strategies for the future, formed the rest of an exercise that has given us much insight not only on the work we do now but also our plans for the future.

## NIMHANS review

A team from the National Institute for Mental Health and Neurosciences (NIMHANS), Bangalore, a premier institution in the country, conducted an in-depth evaluation and review of The Banyan's work. This study was made possible through funding support from the Sir Ratan Tata

Trust. The report presented for the first time an evaluative study of the first ten years of The Banyan journey. A key recommendation made by the experts' report is that facilities of The Banyan type should be made available in each district in the next five years. It also suggested various measures for improving the organisation of health mental care at the institution.

The evaluation report of The Banyan prepared by NIMHANS, titled 'Making a Difference: Caring for Homeless, Mentally Ill Women-- The Banyan Experience', was officially released by Mr. N. Thalavai Sundaram, Minister for Health, Government of Tamil Nadu, on August 27th, 2003.

The report has been circulated among government officials, including the Minister for Social Welfare, Government of Tamil Nadu, Ms. B. Valarmathi, health professionals, social workers, civil servants, college students and police officials.

## Follow-up programme

What is life like outside The Banyan for our former residents? Finding out how the women who had returned home to families were doing, through a series of home visits was the focus of activity in May and June. Visits to families of rehabilitated residents were made to ascertain how well they were doing, if they were taking their medication and if they were able to function to the best of their abilities. Such visits proved to be quite encouraging, as many of our residents, over 40 per cent of those reunited with their families, were doing quite well.

But for the remaining, this was not the case. Unsupportive families, inaccessibility of care facilities and a community that did not understand them or their needs, were some of the problems that our rehabilitated residents faced. Some did not either receive or could not make use of the supply of psychiatric drugs sent to them. The ugly reality of poverty cast a shadow on their lives. The Banyan has learnt much from this follow-up study, and intends to translate these lessons into concrete changes in the lives of the women in the coming months, working at a community level within existing governmental structures.

These follow-up visits that allowed us to look into lives were nothing less than extraordinary. It was wonderful to learn what courageous, independent lives the women who had once rested under The Banyan were now living.

## Visitors

The Banyan receives an endless stream of visitors who both carry and leave behind vivid impressions. In recent months, the important guests included Dr Benedetto Saraceno, Director, Department of Mental Health and Substance Dependence, World Health Organisation, Geneva. He appreciated the spirit of voluntarism behind The Banyan initiative and the fact that it demonstrated the reversibility of adverse mental health conditions. He also discussed a WHO-commissioned study of The Banyan model with a view to replicability.

Ms. Kasturi Gupta Menon Social Welfare Secretary, of the Department of Women and Child Development, India's Ministry of Human Resource Development, and Anji Reddy of Dr Reddy's Laboratories were other distinguished visitors.

Film star Salman Khan celebrated 'Diwali', the festival of lights, with our residents last October, while Vivek Oberoi, another star who has emerged as one of the organisation's strong supporters, and who is helping in raising funds, dropped in twice at The Banyan in the last five months and has pledged support worth Rs 1,000,000.

## Stepped Up Fundraising

With our activities expanding, with more and women coming in every day and with the strengthening of our networking efforts, the need for funds to support this will also grow. We are now faced with a situation where we have to step up our fundraising. In the period between March 2003 and February 2004, the annual fund-raiser, 'Basant Utsav', a festival of music and dance to celebrate the Spirit of Spring, was held twice.

Early in April 2003, 'Basant Utsav' helped us move closer to our dream of a sizeable Corpus Fund. The musicians of the evening, Dr. L. Subramaniam, violinist, and John Neptune, Shakuhachi

exponent, delighted with a concert that transcended all barriers. Both musicians took time out to visit and spend time with our residents here at The Banyan. The soothing music of the Japanese flute filled our home as John Neptune and his daughter Kai, performed for our Banyan Family.

The February 2004 'Basant Utsav' turned out to be the biggest grosser ever for us, bringing in close to Rs. 1,900,000. The artists of the day were legends in their respective fields - classical vocalist Begum Parween Sultana and danseuse Sonal Mansingh - and held our donors in thrall for three hours.

The fund-raising focus is not confined to the large events. Smaller occasions and lighter activities have started making a difference. There is heightened activity at the Movie Club, which organises special screenings of potential box-office hits to raise funds. A special screening of Hindi film "Kal Ho Na Ho" in particular raised Rs 19,500, with another Rs 3850 being raised by simply passing the hat around.

The Banyan also raised funds by sale of products made by our residents and greeting cards. Between October and December, it organised exhibitions at

various premises like schools, colleges and corporate houses, netting over Rs. 51,000.

Similar smaller events are becoming part of the calendar. An evening at Zara's, a Tapas Bar, saw supporters of The Banyan getting together for an evening of live music by "Friends of Bodhi" that raised Rs 50,000. A similar celebration was repeated on Valentine's Day, as 'Friends of Bodhi' once again turned out to play under a moonlit sky on the beach at the MGM resort outside Chennai. Not all who gathered may have danced till the small hours, but all contributed to the cause.



## Reunions (NEED ANOTHER STORY to replace NIRMALA's for REHAB)

Of the many rehabilitations that took place in 2003, perhaps the most touching was that of Nirmala who, after eight months of wandering, found herself in Chennai, far away from home in the central Indian state of Madhya Pradesh.

Delusional, lost, with no money and little hope, her hair matted, her clothes in tatters, Nirmala slept on the roads and ate what little she could find. A concerned individual called The Banyan where, slowly, over time, Nirmala healed. While she was at times tormented by voices and figures no one else could see, medication and time brought her relief. After four months of healing and care at The Banyan, Nirmala was able to communicate a clear address to our social workers.

A phone call to Madhya Pradesh was the miracle that a family suffering the pain of losing a child

for eight months had been praying for. Nirmala's parents, Khem Chand and Kaushalya, had searched the entire northern countryside, desperately looking for their daughter. Nirmala's mother had taken to giving food and clothing to any person she saw living on the streets, hoping that someone somewhere would show the same kindness to her daughter. April 26th, 2003, Saturday morning, saw a beautiful reunion take place at The Banyan, tears flowing, as mother and daughter remained in an embrace that could not be broken.

Then there were stories like Salma's. Salma, a young girl, was brought to The Banyan bound in rusty chains. She went home too. To her 2-year-old son and her mother, her only surviving parent. Salma had made news when she was brought in off the streets, for she was spotted shackled like a wild animal. Understandably, she was completely withdrawn when she came in and sometimes aggressive. Slowly, with time and treatment, Salma began to mellow. She began to speak of her home in Ajmer in the north-western state of Rajasthan and was insistent on returning.

Six months after her admission, Salma formed part of a group of residents who set off to find their homes in far-flung areas of Gujarat, Rajasthan and Punjab. When it was her turn, Salma confidently guided The Banyan rehabilitation team to her home in Ajmer. There the truth about her emerged. It was none other than her family that was responsible for chaining her. Desperate to find a cure for her condition, ignorant of medical means to do so, they had taken her in chains to a 'dargah' (a Muslim house of prayer) at Chittoor. Salma somehow escaped or was separated from her family. The details are hazy. She ended up in Chennai and then at The Banyan. Her family was happy to have found her again, relieved that there was a means to keep her condition stable and grateful that the medical support Salma needed would be provided by The Banyan as long as she needed it, as that care was inaccessible in Ajmer.

## STORIES

### Anbu's Reunion.

Anbu a 35yrs-married woman was at The Banyan for over 3yrs before she was reunited with her family.

Born and brought up in Cumbum, a town in Theni Dist in South India, she got married before 20yrs. She mothered 3 sons one of them is working in a tea estate with his grandmother. Two others have passed away.

Anbu developed mental illness before 10yrs, after she gave birth to her third son. Though her family had tried various treatment methods in all parts of Tamilnadu, she had showed very little improvement. Her husband had later brought her to Chennai and abandoned her on the streets and had informed the family that she's getting treatment in Chennai and had forgotten about Anbu.

She was rescued from the streets of Chennai in a bad physical condition. She was totally disoriented and in a bad psychiatric state. After being on continuous treatment and care she got better and wanted to go back to her family.

A rehab team went in search of Anbu's family with the vague address that she gave. The team met her sister-in-law and got a detailed history of Anbu's illness. She was surprised to see Anbu after four years and was glad to take care of Anbu.

## Raja Mary

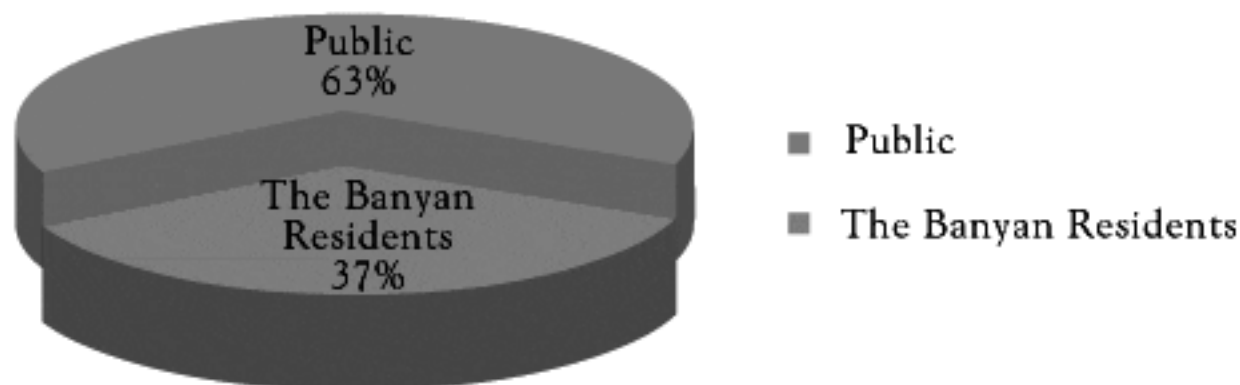
Raja Mary was referred to The Banyan by Adyar all womens police 6th December 2002. Mary approached legal aid to help her trace her husband and get her maintenance. A petition was filed in the high court and repeated summons were send to her husband but there was no response. The court deputed Ms. Shantha Kumari the duty counsel to make home visit and do the need full.

The team on home visit found that she has been separated from her husband for nearly twenty years and that they were not legally divorced but were separated through " Katta Panchayat " and no maintenance was paid. The husband initially refused to even recognise her after a lot of questioning he accepted to the fact that she was his wife. He has remarried and had grown up children and was not interested in taking her back.

Raja Mary too was not very keen to get back with her husband all she wanted was some monthly maintenance her husband agreed to give her a monthly maintenance of Rs. Two thousand which initially will be send to the high court and after three months will be send to her residential address.

She was rehabilitated to her brothers place in pondichery .and has started getting the maintenance amount from her husband

## Outpatient Services



2003-2004		
Total No. of OP Clients visits	1158	
Total No. of OP Clients	259	
Male	43	
Female	120	
Banyan residents	96	
Public	163	63%
The Banyan Residents	96	37%

## THE BANYAN - FACT SHEET

Name of Organisation	The Banyan
Address	6th Main Road, Mogapair Eri Scheme, Chennai - 600 037, Tamil Nadu, India
Communication details	Phone: 91-44-2653 0504 /1987 Fax: 91-44-2653 0105 E-mail: the_banyan@vsnl.com Web: www.thebanyan.org
Contact Persons	Ms. Vandana Gopikumar & Ms. Vaishnavi Jayakumar Managing Trustees
Founded on	August 27, 1993
Founded by	Ms. Vandana Gopikumar & Ms. Vaishnavi Jayakumar
Nature of Organisation	A secular Indian Registered Public Charitable Trust reaching out to the marginalised sections of society.
Trust Registration details	No: 1589/4 Year of Establishment: 1993 Place: Chennai
Board of Trustees	Ms. Vandana Gopikumar Founder Trustee & Hon. Secretary  Ms. Vaishnavi Jayakumar Founder Trustee & Chairperson  Mr. M.A. Vellodi [(IFS) Retd. Foreign Secretary] Treasurer  Mr. Bhashyam [Retd. IRS, Currently CEO Ahmedabad Panjara Pole] Trustee  Dr. Seshadri Hariharan [Psychiatrist, Apollo Hospital] Trustee  Dr. Lakshmi Ravikanth [ Psychological Counsellor] Trustee  Mrs. Maduri Menon [Consultant - HR] Trustee  Mr. Senthil Kumar [Director, Real Image Media Technologies Private Limited] Trustee  Mrs. Padmini Ramesh [Pranic Healer] Trustee  Mrs. Razia Ashraf Trustee

## Financial & Bank Information

Cheques can be drawn in the name of  
The Banyan or The Banyan Corpus Fund.

### BANK ACCOUNTS

#### STATE BANK OF INDIA

(Savings & Building Fund accounts)

Address:

Y-211, 2nd Avenue, Anna Nagar, Chennai 600 040

Accounts:

SB A/C No: 01100041108

BF A/C No: 01100041150

#### STATE BANK OF MYSORE

Address: Kilpauk Garden Branch,

7-A Landons Road, Kilpauk, Chennai 600 010

Ph: 91-44-26411801, email: chn\_klp@mysorebank.com

Account: FCRA A/c no: 01100050276

#### ICICI Bank

Address: Anna Nagar Branch

A78, Plot No 3211

3rd Avenue, Anna Nagar

Chennai 600 102

Ph: 91-44-2626 2334, Email: annanagar@icicibank.com

Account: Corpus A/C No: 602701202072

Recurring Account No : 602701209343

### REGISTRATIONS

Permanent Account Number / GIR No

AAA TT 0468K

Assessing Officer:

Asst. Director

Income Tax (Exemptions) - III,

N.H. Road, Chennai 600 034

Latest year for which a return of tax been filed:

March 31, 2003

Auditor:

Mr. Viji Joseph, Chartered Accountant

G. Joseph & Co.

G4, Parkland Apts

8, Nathan Street

Harrington Road

Chetput

Chennai - 600 031

· Donations are Tax-exempt under Section 80(G) of I.T. Act

· All Donations towards The Banyan Corpus  
Fund are 100% Tax Exempt under Section  
35AC of the I.T Act 1961.

Registered u/s 12A Application No:

291/93-94 dated 8-12-1993

FCRA registered (No: 075900624) dated April 1998.

This sanctions The Banyan permission to  
receive donations in foreign currency.



Vision	In keeping with its motto 'I exist, therefore I am', to address the rights of the completely marginalised sections of society to live and to be .
Project Adaikalam area of work	Care and rehabilitation of mentally ill (not mentally retarded) destitute women in Chennai.
How it all started	<p>Vandana, a student of Madras School of Social Work, when visiting close friend Vaishnavi, student in her old college Women's Christian College, Madras witnessed society's unconcern to the plight of a naked, mentally ill destitute woman in absolute distress outside the campus.</p> <p>While college authorities proved helpful, mental health institutions and NGOs were reluctant to admit this lady in desperate need of medical and psychiatric attention. When one finally agreed, a subsequent follow-up visit revealed her absence and the strong possibility of her being back on the streets. 3 such instances over the next few months left the idealistic duo disillusioned.</p> <p>The Banyan germinated out of the conviction that even the homeless mentally ill should have a right to timely treatment and a chance to a better future. The Banyan was subsequently started after Vandana finished her Masters in Medical &amp; Psychiatric Social Work. Vaishnavi, soon dropped out of her MBA to join her. They were 22 years then.</p>
A Brief History	<p>Adaikalam, The Banyan's residential care and rehabilitation centre for mentally ill destitute women started after some teething problems on Oct. 4th, 1993. 3 staff and its first few residents entered a short while later. Despite tremendous financial stress The Banyan has reached out to over 1100 such women found wandering on the streets of Chennai. The Banyan currently houses over 350 residents in its Transit Home in Mogapair and Long Stay Facility at Otteri.</p> <p>To date, more than 600 others have been successfully rehabilitated / reunited with their families and now lead better lives outside The Banyan.</p> <p>Awareness and timely psychiatric intervention are also areas of interest and activity at The Banyan.</p>
Funding Needs	Rs. 10 lakhs / month approximately for recurring expenses This has been met over the last ten years by donations in cash and kind from individuals, corporate bodies and service clubs. Fundraisers are frequently held to meet the shortfall in income.
Funding Sources	The Banyan has functioned so far with donations in cash and kind from industries, service clubs and individuals. Shortfalls are bridged by regular fund-raisers. Support from the Central Government of India exists under the Ministry of Human resource Development's Swadhar Scheme.

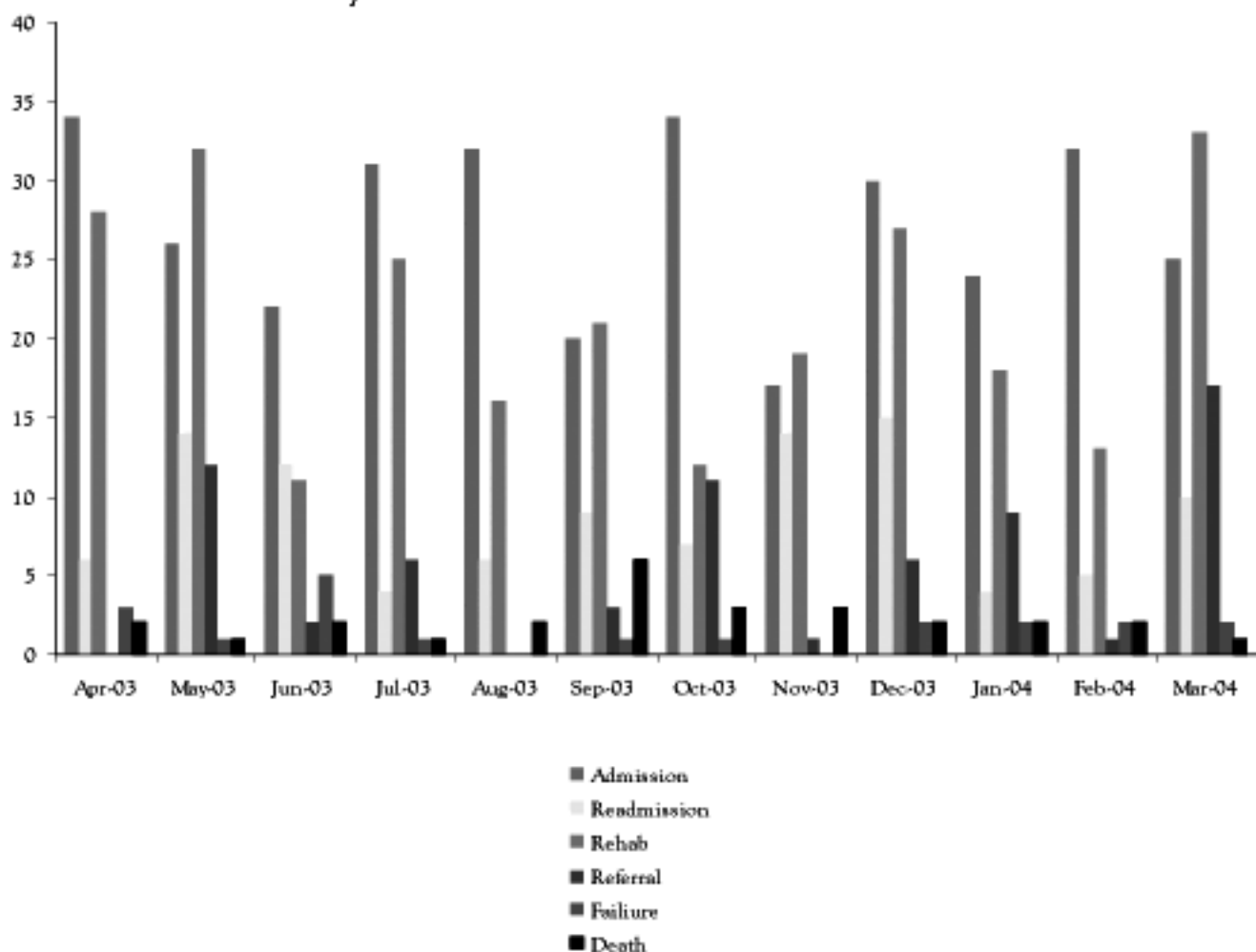
<b>Infra-structural Facilities</b>	<p>The Banyan was facing severe spatial limitations in its cramped inadequate rented premises earlier since operations started in August 1993. One of the major achievements of The Banyan was the representation leading to the Tamil Nadu Government's allotment of 6.5 grounds of land in Nolambur, a prime area within the city. The Banyan's dream home at a cost of Rs. 2 crores became a concrete reality in April 2001 despite tremendous financial strain thanks to the support from India and abroad of individuals, corporate bodies, grant agencies etc.</p>
<b>Organisational Structure:</b>	<p>A two people organization started in 1993 has grown to over 200 people organized as follows:</p> <p>The Banyan family comprises 11 trustees, 80 full time / part time / residential employees working day and night shifts, 2 psychiatrists, 2 general physicians and approximately 125 volunteers. Volunteers and committee members come from various walks of life and have significant experience in their respective professions.</p>
<b>Current Statistics</b>	<p>The Banyan has to date reached out to over 1385 women.</p> <p>This includes 354 women currently being cared for in our Transit Center (Adaikalam) in Mogapair, 48 being cared for in our Long Stay Home 4 in our Group Home and close to 100 people benefiting from our Out-Patient Services.</p>
<b>Services Offered by The Banyan</b>	<ul style="list-style-type: none"> <li>· A 24 hour hotline connected to a response team stationed at The Banyan, ready to respond to any distress call, at any time.</li> <li>· A fully equipped residential Crisis Intervention Centre where rehabilitation takes place under the guidance of a medical team, with vocational training inputs in a home-like atmosphere</li> <li>· A Rest Home for those residents for whom rehabilitation will not be possible immediately, due to the chronic nature of their illness or the lack of family support. A temporary home is currently being run out of a rented premises</li> <li>· The services of The Banyan are extended to all those within the community who are in need of psychiatric counseling and care, through a weekly Out Patient Clinic that also cares for the needs of rehabilitated residents.</li> <li>· An innovative Group Home, that sees rehabilitated residents functioning independently, outside The Banyan's support system, taking care of their own needs, looking to each other for guidance and strength, while gainfully employed.</li> <li>· The Banyan's Community Outreach programs see The Banyan spreading awareness about mental illness through camps and outreach programs in areas where superstitions still reign supreme.</li> <li>· The Banyan networks closely with other Non-Governmental as well as official government machinery, working together, ensuring that the needs of the most marginalized sections of society are protected.</li> <li>· A Legal Aid Clinic that operates out of The Banyan ensuring that the legal rights of the mentally ill are protected.</li> </ul>

- Research and Development is an area in which The Banyan is working towards quantifying and documenting ten years of The Banyan's existence, sharing with the world, the experience The Banyan has gained.
- Lobbying and advocacy, ensuring that the needs and interests of the mentally ill and their families are protected is another area in which The Banyan is active.
- A Community Urban Health Clinic, providing free psychological counseling to members of an urban slum community having the highest suicide rate in the city, has been initiated along with the co-operation of two other organizations.

## Salary Chart

Slab of gross salary per month (in Rs.) plus benefits paid to staff	Male staff	Female staff	Total staff
Less than 5000	9	54	63
5,000 – 10,000	3	8	11
10,000 – 25,000	2	1	3
25,000 – 50,000	-	-	-
50,000 – 1,00,000	-	-	-
Greater than 1,00,000	-	-	-

## Under The Banyan

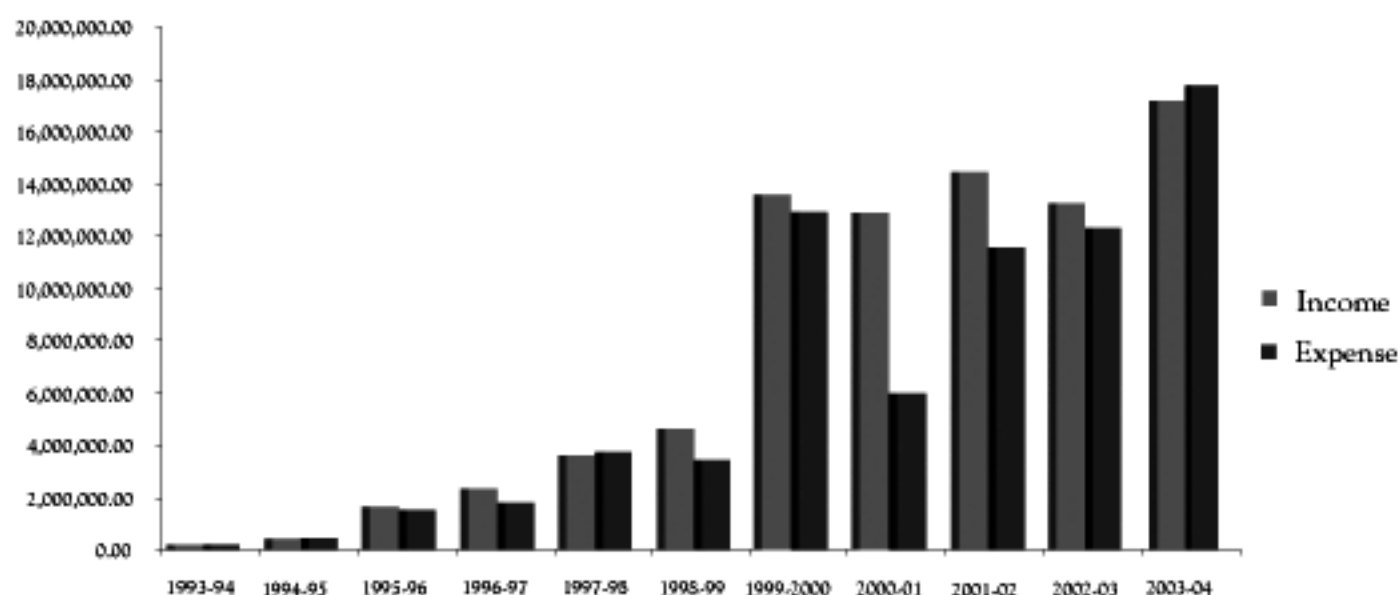


Month	Admission	Readmission	Rehab	Referral	Failure	Death
April-03	34	6	28	-	3	2
May-03	26	14	32	12	1	1
June-03	22	12	11	2	5	2
July-03	31	4	25	6	1	1
August-03	32	6	16	-	-	2
September-03	20	9	21	3	1	6
October-03	34	7	12	11	1	3
November-03	17	14	19	1	-	3
December-03	30	15	27	6	2	2
January-04	24	4	18	9	2	2
February-04	32	5	13	1	2	2
March-04	25	10	33	17	2	1
	327	106	255	68	20	27

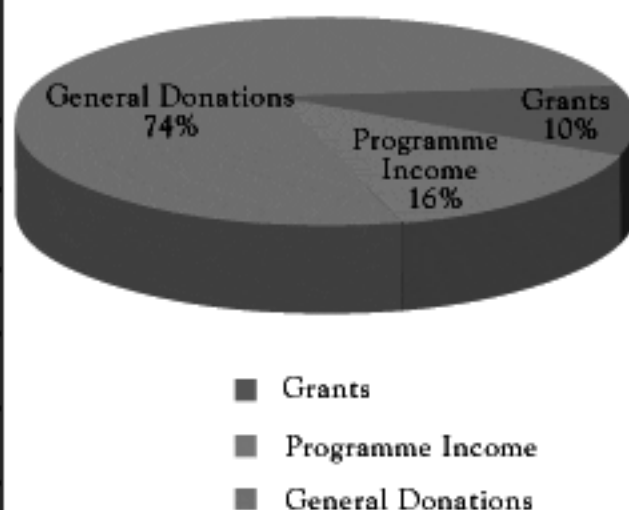
Admission 433  
 Rehab 255  
 Referral 68  
 Failure 20  
 Death 27

Total Admission 327  
 Rescue Mission 232  
 Police Referrals 50  
 NGO Referrals 45

## The Banyan - Income vs Expenditure



Year	Income	Expense
1993 - 94	85,677.60	90,809.44
1994 - 95	396,171.90	425,068.56
1995 - 96	1,656,700.00	1,484,965.02
1996 - 97	2,274,259.30	1,778,141.80
1997 - 98	3,614,254.91	3,757,347.82
1998 - 99	4,583,541.41	3,477,771.52
1999 - 2000	13,583,191.00	4,558,498.86
2000 - 01	12,798,967.33	5,873,981.14
2001 - 02	14,398,254.48	11,547,714.57
2002 - 03	13,187,048.73	12,268,865.52
2003 - 04	17,179,502.56	17,691,374.49
	83,757,569.22	62,954,538.74



**THE BANYAN**  
**BALANCE SHEET AS ON MARCH 31, 2004**

	2002-2003		2003-2004	
	Rs	Rs	Rs	Rs
<b>LIABILITIES :</b>				
<b>GENERAL FUND</b>				
As per Last Balance Sheet	23,352,241.04		24,270,424.25	
Add: Excess of Income over Expenditure	918,183.21	24,270,424.25	511,871.93	23,758,552.32
Corpus Fund		1,647,240.00		4340041.00
<b>SUNDRY CREDITORS :</b>				
As per schedule - III		869,421.91		1226900.05
<b>OUTSTANDING LIABILITIES</b>				
Tax deducted at source payable	6,713.00		32580.00	
Provident fund payable	16,519.00		25198.00	
Salary Payable	112,034.00		172163.00	
Outstanding expenses	177,814.74	313,080.74	168768.22	399009.22
<b>TOTAL</b>		27,100,166.90		29,724,502.99
<b>ASSETS :</b>				
<b>FIXED ASSETS</b>				
As per schedule - I		22,785,738.63		22284123.78
<b>INVESTMENTS</b>				
Savings ( Taxable ) Bonds 2003		-		3,500,000.00
<b>CURRENT ASSETS</b>				
Advances & Deposits - Schedule II		3,502,732.55		1,842,504.86
<b>SUNDRY DEBITORS :</b>				
Vijay Television Limited		294,534.65		-
Architectural Management Services		-		13,366.95
Tax deducted at sources (Refund due)		140,857.90		63,508.90
<b>CASH &amp; BANK BALANCES :</b>				
As per Schedule - III		376,273.17		2,020,998.10
<b>TOTAL</b>		27,100,166.90		29,724,502.99
		(0.00)		0.00

Extracted from the books of accounts  
Information and explanation provided

For THE BANYAN

For G JOSEPH & CO.,  
Chartered Accountants,

Managing Trustee

Vij Joseph,  
Partner.

Place : Chennai.  
Date : June 23, 2004

Schedules for the balance sheet for the year ended March 31, 2004

Schedule II - ADVANCES & DEPOSITS	2002-2003		2003-2004	
<b>Deposits :</b>				
Cellular deposit	3,000.00		3,000.00	
Electricity deposit	58,850.00		58,850.00	
Fixed deposit with banks (ICICI)	3,163,272.00		1,525,730.00	
Fixed deposit with banks (Others)	22,609.00		23,975.00	
Rent deposit	20,000.00		20,000.00	
Cautions Deposit - Staff Training CSIM	28,000.00		44,000.00	
Security deposit - Cna	1,000.00		1,000.00	
Telephone deposit	26,234.00	3,372,965.00	26,234.00	1,702,789.00
<b>Advances :</b>				
Salary loan	179,767.55	179,767.55	139,715.86	139,715.86
<b>Total</b>		3,502,732.55		1,842,504.86
<b>Schedule III - CASH AND BANK BALANCES</b>				
Cash in hand		41,133.69		50,545.28
State Bank of India - 41150		22,816.84		3,354.46
State Bank of India - 41105		139,138.74		500,583.07
State Bank of Mysore - FCRA 1100050276		65,799.15		1,169,713.02
ICICI Corpus Fund - 202072		141,534.00		24,438.00
ICICI Ratan Tata - 203946		658.00		5,392.10
ICICI Recurring Account - 209343		(35,497.00)		299,564.54
State Bank of India (Swadhar) - 41646		729.75		(1,128.26)
State Bank of India - 41105 - 00		-		8,535.89
<b>Total</b>		376,273.17		2,020,998.10
<b>Schedule III - SUNDRY CREDITORS</b>				
Accel CIM Systems & Services Limited		-		52,940.00
Anura Tubewell		5,000.00		-
Ashish Pharmaceuticals		19,470.00		-
Bharathi Consultancy		-		3,000.00
Cera Pharmaceuticals Pvt Ltd		1,473.00		-
Chotannikar Ammin		2,274.20		-
Dev Spart Cool Home		41,075.00		-
Hallmark Printers Pvt Ltd		126,986.00		-
Indian Hospital Supplies Co.,		67,077.59		-
Indiani		-		2,089.00
Kendriya Bhandar		113,082.00		160,983.00
LIC of India		-		49,341.00
Mahaveer Healthcare Pvt Ltd		9,250.30		30,637.90
Mankundan Water suppliers		5,500.00		-
Meena Medical Distributors		-		27,702.30
Natani Pharmaceuticals		4,949.00		-
Oditi Healthcare		-		9,805.00
P.V. Vishnu Prasad		-		2,000.00
Quest Remedies Pvt. Ltd		-		248,543.00
Ramkumar Medicals		36,350.42		69,656.65
Reckon Pharmaceuticals		183,878.17		8,724.60
Rent for Ottari Long Stay Home - Child of Service		-		21,000.00
Ravathy Stone		7,060.00		-
Royal Pastries		1,416.00		3,928.00
R S D Associates		2,568.30		-
S M Fancy Store		1,779.00		4,894.00
S Rajendran / S Raveendran		54,757.00		-
Sujatha Paulose		-		400,000.00
Sundaram Medical Foundation		145,272.09		34,958.60
The Residency		1,900.24		-
The Right Angl		17,685.00		-
UK Housekeeping & Pantry Services - March 2003		-		41,287.00
Architectural Mgmt Services		15,655.10		-
M K M Engineering		4,963.50		55,350.00
<b>Total</b>		869,421.91		1,226,900.05

**OUTSTANDING LIABILITIES:**

A. Bakerm	-	1,510.00
SE/CEDO/WEST	63,989.00	54,963.00
Printing & stationery - Vee Vee Computers	800.00	-
March Rent for Group Home	2,000.00	-
C Joseph & Co	27,000.00	32,400.00
Padmanab - March Pymt	5,000.00	-
Rent for Otteri Long Stay Home - Guild of Service	7,000.00	-
Xerox Modicon Limited - March Maintenance Charges	2,566.00	-
Dr. Elizabeth Negi	7,000.00	-
Jayanthi Xerox - March 2003	1,688.00	1,211.00
RCSL A/c - L.115978	3,997.72	23,332.54
RCSL A/c - L.129161	1,940.20	1,048.12
Indian Security Force - March 2003	4,048.00	6,162.75
UK Housekeeping & Pantry Services - March 2003	14,666.30	-
Bharti Mobinet Limited - VJ's - March 2003	2,732.04	2,120.61
Bharti Mobinet Limited - Seema's - March 2003	2,684.95	-
Bharti Mobinet Limited - Maslyne's - March 2003	2,778.53	2,459.85
BSNL Chennai Telephones	22,924.00	24,903.00
Reliance Telecom	-	2,238.35
S. Jegannathan - Yogalakshmi Stores	-	1,862.00
Shobha Thomas - March 2004	-	10,000.00
Sundam Moorthy's March 2003 Payment	5,000.00	-
Venkatesh Tourist Service	-	4,557.00
Total	177,814.74	168,768.22



**THE BANYAN**  
Income & Expenditure Account for the year ended March 31, 2004

	2002-2003	2003-2004
	Rs	Rs
<b>INCOME :</b>		
Donation and program receipts	13,125,019.53	16,976,868.92
Bank interest	6,356.20	14,136.10
Miscellaneous expenses	-	10,251.54
Interest on fixed deposits	55,673.00	178,246.00
<b>Total</b>	<b>13,187,048.73</b>	<b>17,179,502.56</b>
<b>EXPENDITURE :</b>		
Salaries & wages	1,928,423.45	2,409,127.29
Welfare expenses	4,081,253.54	6,652,122.51
Programme expenses	1,032,711.50	2,513,795.67
House keeping expenses	249,674.00	257,148.00
Bank charges	8,357.00	16,907.00
Advertisement expenses	13,620.00	3,840.00
Rent & amenities	9,000.00	108,000.00
Printing and stationery	190,073.45	292,787.80
Postage and courier	110,200.40	91,608.50
Employer's contribution to provident fund	149,399.00	153,470.00
Travelling and conveyance	496,134.48	666,688.24
Repairs and maintenance	714,845.36	467,842.01
Fuel and gas	125,953.15	204,867.30
Newspapers and periodicals	11,576.75	12,204.00
Miscellaneous expenses	1,749.80	4,739.84
Electricity charges	488,660.00	657,009.00
Telephone charges	417,599.98	569,444.69
Transportation charges	9,400.00	37,758.20
Staff welfare	108,141.00	143,679.00
Subscriptions	6,125.00	6,000.00
Security charges	66,000.00	94,875.00
Remuneration to Auditors	27,000.00	32,400.00
Consultancy charges	4,350.00	119,000.00
Insurance charges	29,600.00	40,154.00
Vehicle maintenance	191,410.26	169,388.54
Share of Road cost	-	150,000.00
Interest Paid	-	4,764.00
Depreciation on assets	1,797,407.40	1,811,753.90
<b>Total</b>	<b>12,268,565.52</b>	<b>17,691,374.49</b>
<b>Excess of expenditure over income</b>	<b>918,183.21</b>	<b>(511,871.93)</b>

Extracted from the books of accounts  
Information and explanation provided

For THE BANYAN

For G JOSEPH & CO.,  
Chartered Accountants,

Managing Trustee

Vij Joseph,  
Partner.

Place : Chennai.  
Date : June 23, 2004

THE BANYAN  
Receipts & Payments Account for the year ended March 31, 2004

	2002 - 2003		2003 - 2004	
	Rs	Rs	Rs	Rs
<b>RECEIPTS :</b>				
<b>OPENING BALANCES :</b>				
Cash in hand	48,189.69		41,133.69	
State Bank of India - 41150	1,217.59		22,916.84	
State Bank of India - 41108	90,992.96		139,138.74	
State Bank of India (savings) - 41646	-		729.75	
State Bank of Mysore - FCRA 1100050276	9,263.64		65,759.15	
State Bank of Mysore	9,058.00		0.00	
ICICI Bikaner Tara - 203946	-		658.00	
ICICI Recurring Account - 209343	-		35,497.00	
ICICI Corpus Fund - 202072	7,761.00	166,482.88	141,534.00	376,273.17
Donation and program receipts		12,487,219.53		16,656,568.92
Fixed deposits matured		457,451.00		0.00
Bank interest		6,356.20		14,136.10
Security deposit refunded from CMDA		120,000.00		-
Interest on fixed deposits		55,673.00		178,246.00
Tax deducted at source payable		6,713.00		32,880.00
Increase in Sundry Creditors		343,177.01		357,478.14
Employees contribution to provident fund		114,506.00		-
Corpus fund received		1,647,240.00		2,692,901.00
Miscellaneous Income		-		10,251.54
Decrease in Sundry Debtors		-		281,167.70
Decrease in Advance & deposits		-		1,660,227.69
Income tax refund received		-		108,885.00
<b>Total</b>		<b>15,404,818.62</b>		<b>22,368,915.26</b>
<b>PAYMENTS :</b>				
Salaries & wages		1,919,150.45		2,348,998.29
Welfare expenses		4,064,253.54		6,652,122.51
Programme expenses		1,032,711.50		2,513,795.67
House keeping expenses		254,934.70		257,148.00
Bank charges		8,357.00		16,907.00
Advertisement expenses		13,820.00		3,840.00
Rent & amenities		-		108,000.00
Printing and stationery		187,585.45		292,787.80
Postage and courier		110,200.40		91,608.50
Employees contribution to provident fund		454,348.00		144,791.00
Travelling and conveyance		496,134.48		666,688.24
Repairs and maintenance		712,279.36		467,842.01
Fuel and gas		125,953.15		204,867.30
Newspapers and periodicals		11,576.75		12,204.00
Miscellaneous expenses		1,749.80		4,739.84
Electricity charges		424,671.00		657,009.00
Telephone charges		380,542.54		569,444.69
Transportation charges		9,400.00		37,758.20
Staff welfare		113,274.00		143,679.00
Subscriptions		6,125.00		6,000.00
Security charges		67,452.00		94,875.00
Audit fees		10,500.00		32,400.00
Consultancy charges		14,350.00		119,000.00
Insurance charges		29,600.00		40,154.00
Vehicle maintenance		191,410.26		169,388.54
Share of Road Cost		-		150,000.00
Interest Paid		-		4,764.00

Tax deducted at source (donors)		107,004.00		31,506.00
Tax deducted at source paid		83,983.00		6,713.00
Fixed assets purchased		361,550.00		989,839.05
Fixed deposits		3,358,272.00		-
Staff loan		110,828.42		-
Rent deposit		20,000.00		-
CSIM advance		28,000.00		-
Increase in Sundry Debtors		288,028.65		-
Investment in savings (Taxable ) Bonds		-		3,500,000.00
Decrease in outstanding liabilities		-		9,046.52
<b>CLOSING BALANCES :</b>				
Cash in hand	41,133.69		50,545.28	
State Bank of India - 41150	22,516.84		3,354.46	
State Bank of India - 41108	139,138.74		500,583.07	
State Bank of Mysore - PCRA 1100050276	65,739.15		1,169,713.02	
ICICI Corpus Fund - 202072	141,534.00		24,438.00	
ICICI Ratan Tata - 203946	658.00		5,392.10	
ICICI Recurring Account - 209343	(35,497.00)		259,564.54	
State Bank of India (Sradhar) - 41646	729.75	376,273.17	(1,128.26)	
State Bank of India - 41108-00			8,535.89	2,020,998.10
<b>Total</b>		<b>15,404,818.62</b>		<b>22,368,915.26</b>

Extracted from the books of accounts  
Information and explanation provided

For THE BANYAN

For G JOSEPH & CO.,  
Chartered Accountants,

Managing Trustee

Place : Chennai  
Date : June 23, 2004

Vij Joseph,  
Partner.

**THE BANYAN**  
**SCHEDULE III - SCHEDULE OF FIXED ASSETS AND DEPRECIATION**

S.No	Name of the Asset	WDV as on 01.04.2003	Additions/(Deletion) I HALF	II HALF	Total 31.03.2004	Rate	Depreciation	WDV as on 31.03.2004
1	Air Conditioner	84,801.50	-	-	84,801.50	25%	21,200.40	63,601.10
2	Audio Visual Equipment	67,753.30	1,000.00	-	68,753.30	25%	17,188.30	51,565.00
3	Building	19,784,758.78	-	270,489.50	20,055,248.28	5%	996,000.20	19,059,248.08
4	Blinding machine	1,406.75	-	-	1,406.75	25%	351.70	1,055.05
5	Camera	3,423.55	995.00	-	4,418.55	25%	1,104.60	3,313.95
6	CCTV	18,478.10	-	-	18,478.10	25%	4,619.50	13,858.60
7	Ceiling Fans	96,352.90	1,250.00	1,060.00	98,662.90	25%	24,533.20	74,129.70
8	Computer & Accessories	52,602.10	193,550.00	66,700.00	312,852.10	60%	167,701.30	145,150.80
9	Cycles	816.85	-	-	816.85	25%	204.20	612.65
10	Electrical Fittings	50,905.40	-	-	50,905.40	25%	12,726.40	38,179.00
11	Facsimile	10,125.00	-	-	10,125.00	25%	2,531.30	7,593.70
12	Frame Loom	39,075.00	-	-	39,075.00	25%	9,768.80	29,306.20
13	Franking Machine	-	-	65,000.00	65,000.00	25%	8,125.00	56,875.00
14	Furniture and Fixtures	563,919.60	7,319.35	241,950.00	813,188.95	10%	69,221.40	743,967.55
15	Generator	334,123.65	-	-	334,123.65	25%	83,530.90	250,592.75
16	Land - Uthmanur	-	-	300,000.00	300,000.00	0%	-	300,000.00
17	Lamination Machine	5,057.40	-	-	5,057.40	25%	1,264.40	3,793.00
18	Laundromat	157,350.00	-	-	157,350.00	25%	39,337.50	118,012.50
19	Lockers	1,701.90	-	-	1,701.90	25%	425.50	1,276.40
20	Medical Equipment	46,023.55	-	-	46,023.55	25%	11,505.90	34,517.65
21	Motor Pump	4,725.00	7,086.00	50,765.00	62,576.00	25%	9,298.40	53,277.60
22	Motor Cycle	3,937.50	-	-	3,937.50	25%	984.40	2,953.10
23	Motor Vehicles	786,124.25	-	-	786,124.25	20%	157,224.90	628,899.35
24	Musical Equipments	1,312.50	-	-	1,312.50	25%	328.10	984.40
25	Pagers	18,496.30	-	-	18,496.30	25%	4,624.10	13,872.20
26	Paper making Machine	111,825.00	-	-	111,825.00	25%	27,956.30	83,868.70
27	Pottery Machine	4,705.30	-	-	4,705.30	25%	1,176.30	3,529.00
28	Punching Machine	4,038.90	-	-	4,038.90	25%	1,009.70	3,029.20
29	Refrigerators	109,346.70	-	500.00	109,846.70	25%	27,399.20	82,447.50
30	Sewing Machine	35,413.70	-	750.00	36,163.70	25%	8,947.20	27,216.50
31	Steel Trunks	6,822.50	-	-	6,822.50	25%	1,705.60	5,116.90
32	Tape Recorder	4,826.40	-	-	4,826.40	25%	1,206.60	3,619.80
33	Telephone	187,074.25	3,121.00	7,500.00	197,695.25	25%	48,486.30	149,208.95
34	Televisions	36,010.25	-	1,500.00	37,510.25	25%	9,190.10	28,320.15
35	Typewriter	300.30	-	-	300.30	25%	75.10	225.20
36	U P S	80,015.60	-	-	80,015.60	25%	20,003.90	60,011.70
37	Vibrator	3,875.90	-	-	3,875.90	25%	969.00	2,906.90
38	Vacuum Cleaner	2,643.70	-	-	2,643.70	25%	660.90	1,982.80
39	Washing Machine	6,446.35	500.00	500.00	7,446.35	25%	1,799.10	5,647.25
40	Water Purifier	845.45	-	-	845.45	25%	211.40	634.05
41	Water Cooler	18,796.90	-	-	18,796.90	25%	4,699.20	14,097.70
42	Water Heater	196.90	-	500.00	696.90	25%	111.70	585.20
43	Weighting Machine	1,915.35	-	-	1,915.35	25%	478.80	1,436.55
44	Wet Grinder	3,163.30	10,100.00	-	13,263.30	25%	3,315.80	9,947.50
45	Xerox Machine	34,205.00	-	-	34,205.00	25%	8,551.30	25,653.70
46	Work in progress	-	-	78,003.20	78,003.20	0%	-	78,003.20
	<b>Total</b>	<b>22,785,738.63</b>	<b>224,921.35</b>	<b>1,085,217.70</b>	<b>24,095,877.68</b>		<b>1,811,753.90</b>	<b>22,284,123.78</b>

**THE BANYAN**  
**SCHEDULE OF FIXED ASSETS AND DEPRECIATION**

	WDV as on 01.04.2002	I HALF Additions/(Deletion)	II HALF	Total 31.03.2003	Depreciation Rate	Depreciation	WDV as on 31.03.2003
1 Air Conditioner	113,068.70	-	-	113,068.70	25%	28,267.20	84,801.50
2 Audio Visual Equipment	90,337.70	-	-	90,337.70	25%	22,584.40	67,753.30
3 Building	20,826,061.88	-	-	20,826,061.88	5%	1,041,303.10	19,784,758.78
4 Binding machine	1,875.65	-	-	1,875.65	25%	468.90	1,406.75
5 Camera	4,564.75	-	-	4,564.75	25%	1,141.20	3,423.55
6 CCTV	24,637.50	-	-	24,637.50	25%	6,159.40	18,478.10
7 Ceiling Fans	128,470.50	-	-	128,470.50	25%	32,117.60	96,352.90
8 Computer & Accessories	131,505.30	-	-	131,505.30	60%	78,903.20	52,602.10
9 Cycles	1,089.15	-	-	1,089.15	25%	272.30	816.85
10 Electrical Fittings	55,440.60	10,100.00	2,000.00	67,540.60	25%	16,635.20	50,905.40
11 Facsimile	13,500.00	-	-	13,500.00	25%	3,375.00	10,125.00
12 Frame Loom	-	52,100.00	-	52,100.00	25%	13,025.00	39,075.00
13 Furniture and Fixtures	517,953.90	61,723.50	44,431.50	624,108.90	10%	60,189.30	563,919.60
14 Generator	445,498.25	-	-	445,498.25	25%	111,374.60	334,123.65
15 Lamination Machine	6,743.20	-	-	6,743.20	25%	1,685.80	5,057.40
16 Leundromet	199,640.00	10,160.00	-	209,800.00	25%	52,450.00	157,350.00
17 Lockers	2,269.20	-	-	2,269.20	25%	567.30	1,701.90
18 Medical Equipment	35,314.75	8,550.00	15,000.00	58,864.75	25%	12,841.20	46,023.55
19 Motor Pump	6,300.00	-	-	6,300.00	25%	1,575.00	4,725.00
20 Motor Cycle	5,250.00	-	-	5,250.00	25%	1,312.50	3,937.50
21 Motor Vehicles	363,905.35	-	550,000.00	913,905.35	20%	127,781.10	786,124.25
22 Musical Equipments	-	-	1,500.00	1,500.00	25%	187.50	1,312.50
23 Peggers	24,661.80	-	-	24,661.80	25%	6,165.50	18,496.30
24 Paper making Machine	-	-	127,800.00	127,800.00	25%	15,975.00	111,825.00
25 Pottery Machine	6,273.70	-	-	6,273.70	25%	1,568.40	4,705.30
26 Punching Machine	5,385.20	-	-	5,385.20	25%	1,346.30	4,038.90
27 Refrigerators	137,628.90	-	7,000.00	144,628.90	25%	35,282.20	109,346.70
28 Sewing Machine	3,500.80	1,000.00	36,615.00	41,115.80	25%	5,702.10	35,413.70
29 Steel Trunks	9,096.70	-	-	9,096.70	25%	2,274.20	6,822.50
30 Tape Recorder	3,518.60	-	2,500.00	6,018.60	25%	1,192.20	4,826.40
31 Telephone	205,833.95	-	37,370.00	243,203.95	25%	56,129.70	187,074.25
32 Televisions	14,763.65	-	28,500.00	43,263.65	25%	7,253.40	36,010.25
33 Typewriter	400.40	-	-	400.40	25%	100.10	300.30
34 U P S	106,687.50	-	-	106,687.50	25%	26,671.90	80,015.60
35 Vibrator	5,167.90	-	-	5,167.90	25%	1,292.00	3,875.90
36 Vacuum Cleaner	3,525.00	-	-	3,525.00	25%	881.30	2,643.70
37 Washing Machine	8,595.15	-	-	8,595.15	25%	2,148.80	6,446.35
38 Water Purifier	1,127.25	-	-	1,127.25	25%	281.80	845.45
39 Water Cooler	21,562.50	-	3,000.00	24,562.50	25%	5,765.60	18,796.90
40 Water Heater	262.50	-	-	262.50	25%	65.60	196.90
41 Weighing Machine	2,553.75	-	-	2,553.75	25%	638.40	1,915.35
42 Wet Grinder	4,217.70	-	-	4,217.70	25%	1,054.40	3,163.30
43 Xerox Machine	45,606.70	-	-	45,606.70	25%	11,401.70	34,205.00
Total	23,583,796.03	143,633.50	855,716.50	24,583,146.03		1,797,407.40	22,785,738.63



**The Banyan**  
I exist therefore I am

The Banyan,  
6th Main Road, Mogapair Eri Scheme, Mogapair West,  
Chennai - 600 037, TamilNadu, India  
Ph:091-44-2653 0504, Fax: +091-44-2653 0105  
E-mail: [the\\_banyan@vsnl.com](mailto:the_banyan@vsnl.com).  
Web Site: [www.thebanyan.org](http://www.thebanyan.org).