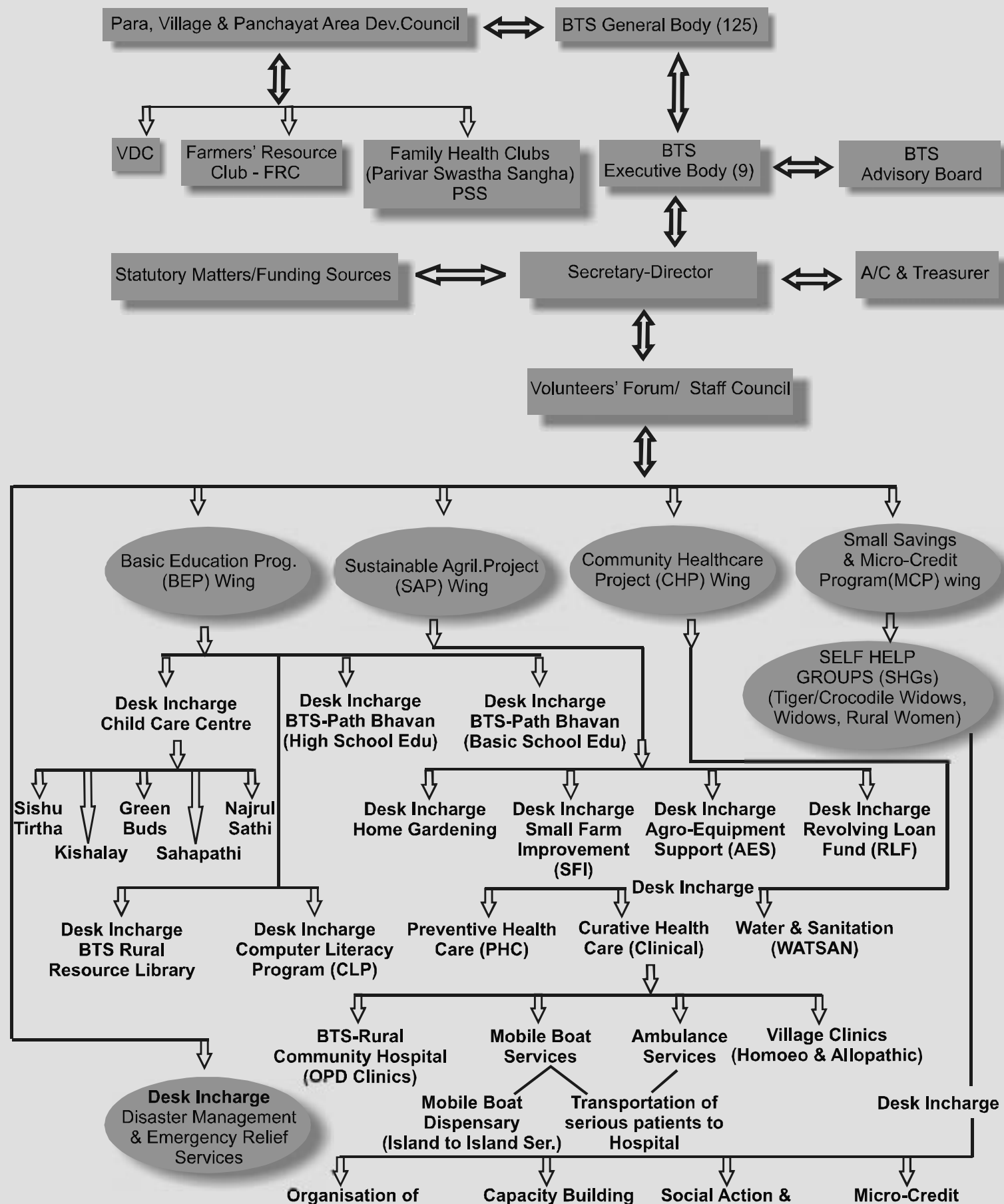


BTS WORKING STRUCTURE



Disaster Relief & CBDRR Initiatives

The devastating Cyclone Aila has destroyed a large area of human habitation including their Shelters & major sources(pond and Agricultural Lands) of livelihood and existence in the delta points under the Biosphere Zone of Sunderban Tiger Reserve Forests. Saline River water by flood as its next phenomenon swallowed away everything they had and made the victims with no livelihood opportunities to explore. BTS finds nothing but our friend-organisations' (PUS-Baruipur with Unicef & Caritas India, CRS, LWS under IAG-West Bengal, AID-USA, Asha For Education-USA, Vibha-USA, PPI-USA and others) kindly supported their harder days. The situation of 15 worstly-affected-delta villages (under CD Blocks of Kultali, Patharpratima, Mathurapur-II, Gosaba & Basanti) is now with a different reality to face as there is no scope of farming lands or no pond to have fish-culture as one of their alternative livelihood sources in the flood-hit areas. Migration started, poor-victims have started begging and leading lives almost in a starved situation. BTS involved community in solving the crisis. BTS supported 9326 affected families (22,313 persons) Relief materials (Tarpaulins, Food grains like Rice, Dal, Potatos, and Bedsheets, Blankets, Mosquitos, Lanterns etc.) Most of the families are managing with no huts but under the sky with a tarpaulin-sheet. During the days of Water-air-borne diseases like diarrhoea, BTS organised Medical Camps with volunteer-doctors from AID-USA.

BTS has been trying to be a Districtlevel as well as Statelevel member of State Inter Agency Group(IAG) West Bengal where there are some Relief Partners to cope with the such problem/crisis. There are Oxfam, Care, Unicef, CRS, and other humanitarian organisation engaged in Community Based Disaster Risk Reduction initiatives(CBDRR). Moreover, BTS has been forming a CBDRR Group involving the local volunteers and youth Organisations to combat the situation after aila-like disasters.

PULSEPOLIO SOCIAL MOBILISATION

Polio Eradication Programme support for Social Mobilisation for IPPI (February'10 NID) a UNICEF supported project implemented by the Office of the District Magistrate, Monitoring (PE & RI) Cell / in collaboration with CMOH / NPSP (WHO), S 24-Pgs. BTS had participated in the drive in a generous way and successfully conducted its efforts in the selected 3 GPs (Deulbari, Gopalgunj, Kundakhali) under Kultali Block, a High Risk Block as per recommendation.

BTS involved Block Supervisor, GP level Volunteers, PPK level, Para, GS, Transis point level volunteers to cover the XR families in the Block as mentioned.

BTS in close collaboration with BMOH organised a thorough campaign through conducting Social Mobilisation-meetings at GP, Block level as well as School, Madrasha, Religious Group-level sensitisation meeting to make the drive successful. BTS was received thanks for covering XR families in the target GP areas under the Block-Kultali.

BTS-COMPUTER TRAINING CENTRE

With supports from **Asha For Education-USA through WAH-2007-08**, BTS has launched its Computer Literacy Program(CLP) for rural youths and school children. Initially computers from FOYM were there to have a basic ideas but recently there installed 2 new computer with high specifications for the purpose. Necessary furnitures and Trainers have been organised. Nasscom Foundation in collaboration with Azim Premji Foundation, Tata Consultancy Services(TCS), Microsoft has initiated a Rural Knowledge Centre via Nanritam.

Students from BTS-PathBhavan and local Youths are decided to have this facility in such a delta area of Sunderban where electricity is still a dream. Solar power and diesel engine-generated power to be the main source to run computer training efforts. More solar units and computers are necessary to include more youths and school children under this venture. BTS is requesting funds or computer alongwith Solar panels from our donors/supporters to promote it.



WATSAN:WATER & SANITATION

Water & Sanitation Systems in the Sunderban island areas are as worst as that of the Primary Health Care.A recent area study reveals the bare fact of the very crucial need of WATSAN efforts as there is no Sanitary Latrine in 90% of the total families under BTS Operational Areas. Unlike HouseholdSanitary Latrine(HSL),problem of Safe Drinking Water is almost the same tragic event in the Summer Season when almost all the village pond-water run dry. Moreover,there is hardly found any Tubewell which has sufficiently covered 100 families where Pond Water is not goodfor use due to exessive land and water pollution because of massive usage of Chemical Pests and Open-air defecation...!To combat the insanitary condition,BTS has already started to implement a WATSAN Project having initial financial support from **PPI-USA** .In this effort, building of Lowcost Household Sanitary Latrine(HSL) is going on and till date only 27 units have been built.Selected by the SHG women-members a beneficiary family is repaying Rs.400.00 / Monthly Installments to repay the full amount of a HSL costing Rs.5,000.00 in 12 equal installments.BTS is keen to undertake a pilot project to make the remote villages as Nirmal Gram as per GOI's National Policy.



BTS-RURAL COMMUNITY HOSPITAL

Development Cooperation Ireland(DCI) under Ministry of Foreign Affairs,Govt. of Ireland through the [Embassy of Ireland New Delhi](#) has funded the Phase I(2 Yrs) project support towards construction of OPD Clinics & fabrication with X-Ray & Patho-Lab ,Medicine Bank and Sanitary infrastructures as necessary.

BTS is serving the island communities who have no sufficient access to basic healthcare in their acute need.Present status of [BTS-Rural Community Hospital](#) is the former Clinic of BTS.People of Southern Sunderban are grateful to DCI/Embassy of Ireland.Pat Bourne,Hon'ble First Secretary & Dy. Chief of Mission inagurated it and BTS is now trying to raise funding for its recurring and some non-recurring items so as to promote its IPD services basically for Mothers and Children in need. [ICA-USA & AID-USA aided the community health proj.previously.](#)



MOBILE BOAT DISPENSARY UNIT

Having supports from ICA-USA in last few years we extended our Island-To-Island medicare services for the suffering people without Hospital/Medicare Centres inside the coastal islands in Sunderbans...Weekly Floating Dispensary is going from one Island to another Island and providing medical supports by specialist Doctors and free medicines against a registration fees of Rs. 5.00 per visit per patient. [MIVA-HOLLAND](#) has donated an Ambulance, big size boat & newly purchased speed boat for Mobile Medicare & Emergency Transportation purpose. [Such Mobile Boat Dispensary efforts are of greater need in the delta.](#)



EMERGENCY RESPONSE UNIT

BTS requesting all of our kind supporters/donors and wellwishers elsewhere they are to come forward and donate our Hospital so as we can run it for the suffering humanity here in the delta of Sunderban where there is no such venture to serve them in great need.

Keeping the Hospital as its central point BTS is keen to extend its medical supports, both preventive and Curative, for people living in other delta / islands close to BTS area of operation.So, BTS has made out a plan to cover atleast 4-5 delta under Kultali, Patharpratima and Mathurapur-II CD Block in the district of South 24 parganas.

A sum of Rs.1.5 Lakhs is required per month (i.e. Rs.18 Lakhs) to run its OPD Clinics here as per plan of area described above.

*****BTS has 80G(Exemption) under Income Tax Act, 1961*****



CHILDRIGHTS & EDUCATION

BTS-Path Bhavan is the Working children's education initiative of our organization. This was the first venture into development support in 1983 for the poor working children of Kultali which was later upgraded to the Upper Primary (High School) level.

Presently, there are 242 students in 8 classes from Preparatory to Class VI. Most of the students are from very poor family background. In addition to Joyful Learning, the students are given nutritional and healthcare support besides Vocational Outlook in absence of Learning –pressure.[Asha for Education,USA](#) supporting this education efforts for a longtime partnership.

We are also running a **Children Resource Library** and a **Computer Literacy Center** to support children's education and technical capacities in this remote rural area. BTS also provides Books to Poor Students (BPS),Nutritional Tiffins & Mid-day meals, Basic



Healthcare by doctors, School Uniforms,Hygenic materials and educational materials for enabling the poor parents economic burden-free and to send their loving ones to regular schooling without involving them in the livelihood activities like fishing and farming.

Besides exercise on Joyful Learning Process(JLP), BTS is giving emphasis on propagating TLMs by the trained teachers.Expansion of JLP to local Govt. Primary Schools(3 Units) is a good response and the govt schools are interested to take care of the TLMs to attract the attention of their students with a increased attendance. **BTS-PathBhavan** is thus entering into a catalyst's role to create a better atmosphere in the field of basic vis-a-vis high school education with parents' interest to allow their children to regular schooling entertaining child rights to quality education and protection.



CLASSWISE CHILDREN ENROLLED

| Class | 2006-07 | 2007-08 | 2008-09 | 2009-10 |
|-------|---------|---------|---------|---------|
| LKG | 40 | 37 | 35 | 50 |
| UKG | 45 | 27 | 23 | 31 |
| I | 47 | 34 | 22 | 23 |
| II | 28 | 40 | 23 | 22 |
| III | 31 | 25 | 31 | 26 |
| IV | 06 | 27 | 22 | 28 |
| V | 06 | 18 | 27 | 39 |
| VI | 16 | 10 | 16 | 23 |
| VII | | 17 | 10 | |
| VIII | | | 14 | |
| | 219 | 235 | 223 | 242 |



OUR PRIME CONCERN

- ** No Drop-out/Out-of-school Chidren
- ** No Child Abuse/Child Labour
- ** No Girl Child Trafficking/Sex Abuse
- ** Quality /Value-based Education with Vocational Approach
- ** Sponsorship for Rural Talented Students in deplorable situation
- ** Rainwater Treatment for SDW in Schools



BTS - PRE-SCHOOL CENTRES

To ensure protection and rights of the 3-6 age group children of rural working mothers living in the delta areas of Sunderban Bio-sphere Reserve ,BTS has been running 6 Pre-School Centres(PSCs) formerly popularized as Child Care Centres(CCCs) in 2 delta CD Blocks Kultali and Patharpratima in the District of South 24 Parganas. These PSCs are now able to save and take care of 150 vulnerable children from Rural Working mothers’ families in need as they are fully engaged in earning livelihoods from nearby Forests or Rivers or from daily wage labouring or working as maid-servants.Anyhow, the children are in their full use of Childhood utilities with motherly cares.



Central Social Welfare Board(CSWB), New Delhi has also been supporting 2 main Centres(Creches) at BTS School (PathBhavan) Campus.BTS has been utilising the full supports from CSWB besides a part from **Vibha-USA** for other 4 Centres too. Our main motto is enroll each and every rural working mother’s malnurished children into such Pre-School Centres so as to habituate them towards regular schooling and making a part of universal learning under the Campaign of SSA initiated by our Govt. Joyful Learning Process(JLP) is a medium of spreading this mission of education with ensuring quality education to children of this generation.As a part of JLP, several functions and observation days are observed so as to create an awareness among the children . Mid-day meals/nutritional tiffins are provided alongwith basic health care facilities by initiating Village Homoeo Clinics with the needed medicines.Besides these, Yoga,Bratachari,Dancing and Singing Clubs have been promoted to attract children’s rapt attention.Annual Contest on Sports and Culture are usually held.



| Sl. No. | Name of PSCs | Total | Boys | Girls | Mainst-reamed |
|---------|--------------|-------|------|-------|---------------|
| 1 | SishuTirtha | 25 | 13 | 12 | 12 |
| 2 | GreenBuds | 25 | 14 | 11 | 06 |
| 3 | SahaPathi | 25 | 13 | 12 | 14 |
| 4 | Kishalay | 25 | 14 | 11 | 11 |
| 5 | Nazrul | 25 | 12 | 13 | 05 |
| 6 | Rammohun | 25 | 05 | 20 | 09 |
| | Total | 150 | 71 | 79 | 57 |

our concern for working mothers’ children

- ** Ensure protection of Working mothers’ children
- ** Ensure right to education, nutrition & healthcare
- ** Develop school-going habit & safe from exploitation
- ** Incorporate National Integration & Cultural interest
- ** Empowerment of Working Mothers to regain social dignity,entitlement,job-opportunities and alternate source of income so as to rehab in the same society with a view to stop/minimize migration to urban cities
- **Promotion & inclusion into SHG(Self Help Groups)

EFFORTSAT A GLANCE

- Pre-School Centres- 6 Units in 6 delta villages
- Children Covered-150(25 in each Unit)
- Trained Sahayika-12(2 in each of 6 Units)
- Nutritional Tiffin/Mid-day Meals provided
- Clinical Healthcare ,ISM in Nature(Homoeo & Yoga)



BTS CONCERN ISSUES TO GO FORWARD

- **Save Motherhood And Child Survival(SMACS)**
- **Protection and Care of Working mothers’ Children**
- **Stop Trafficking and Child Abuse by networking**
- **Child Rights and Quality Education**
- **Reduce Rate of Malnutrition & Stop Child TB**
- **Save Children’s Eyesight, prevent blindness**
- **No Child out-of-school campaign**

BTS-MICRO CREDIT INITIATIVES

Perhaps adversity says so...unlike one morning Kanaklata heard her husband’s death news due to sudden attack of the Royal Bengal Tiger of the Sunderban Reserved Forest when he was busy enough to earn for his family by collecting NTFPs..Since started her life of tragedy and acute helplessness with her little child who is now a hotelboy in Delhi city...! One of our Field Movilizers came to know this story and went to her hut to motivate and brought her to add as a SHG member in Group No. 95., Lopamudra SHG. Being a valued SHG member She took loan twice and started Farming in a sustainable way,Successfully she repayed the loan of firsttime and received the second one.She is now earning by selling Vegetable produced in her garden nearer to her hut. Thus BTS micro-credit project is making a difference here among the 2856 vulnerable women in 187 SHGs covering 8 remote delta villages of Sunderban.More supports can help us to make more such changings.Tiger Widows Organisation,Ireland aided initially the effort and BTS is continuing the supported initiatives.



| SHG-MFI Activities | 2007-08 | 2008-09 | 2009-10 |
|------------------------|-----------|-----------|-----------|
| No. of SHG/SEG | 224 | 231 | 252 |
| No. of Members | 3071 | 3201 | 3682 |
| Total Savings | 11,23,540 | 13,28,400 | 16,00,210 |
| Total Credit Disbursed | 24,70,707 | 28,40,407 | 20,17,407 |
| Total Repayment | 13,66,583 | 18,25,783 | 22,29,033 |
| Total No. of Borrowers | 268 | 193 | 189 |



BTS is now taking initiatives to have Bank Link-age of efficient groups(SHG) for further financial supports/credits to promote livelihood opportunities and stop migration to urban cities.NABARD/SIDBI/SBI will be approached.

BTS-BIO FARMING PROJECT : AN ALTERNATIVE

7 years’ back BTS entered into strategic implementation of Sustainable Agricultural Project (SAP). The major objective of the project is to ensure food security to the poor, minimizing the indiscriminate use of chemical fertilizers and pesticides while promoting the use of bio-fertilizers and bio-pest controls under the agro farming technique. The project gives emphasis on local natural resource optimization. The project has been launched in two phases: Home/Nutrition Gardening by rural poor housewives and Small Farm Improvement Program for small and marginal farmers in the villages. Through this project, it is expected that the farmers will be able to cultivate fallow lands with residual moisture. Embassy of Ireland, New Delhi has funded the project to make it possible through establishment & promotion of an Agro-Resource Centre (ARC)/Krishi Sahayata Kendra(KSK). **PPI-USA** has recently supported such type of initiative to promote Bio-Farming with country seeds promoting bio-fertilisers or pesticides.Seed Banks and Grain Bank with Farmers’ Capacity building towards organic farming are its key source .A-V aids to sensitize the FRC members on different agro issues/problems to be shown in A-V shows.Promotion of Animal Husbandry(rearing of Ducks/Chicks etc.This **Farmers’ School of Learning(FSL)** Project is considered for3 years and in the first year it involved 40 farmers to train them in bio/organic farming.

