



Asha
for Education


Bringing hope through education

Sambhaav Trust
Ecological Restoration and Education in Schools

**Annual Review for 2024-25 and
Budget Proposal for 2025-26 (Year 3/7)**

Asha Austin
June 02, 2025





downtoearth.org.in

2013

This dry and dusty piece of 500-acres of land on the outskirts of Jaipur

2021

Overview

❑ High-level

- ❑ Focus area - Ecological Restoration and Water

- ❑ Geographical area

 - ❑ On-ground work - Rajasthan, Tamil Nadu, Gujarat, Uttarakhand and Bihar

 - ❑ Outreach - Punjab, Karnataka, Haryana, Delhi, Maharashtra, Goa, Jharkhand and West Bengal

- ❑ NGO inception, history

 - ❑ Started in 1999 and focused on Water, land and natural resource management systems

 - ❑ On-ground work benefited 75,000 families in about 400 villages

 - ❑ 4500+ water, land and natural resource management systems over the last 10 years

- ❑ Asha engagement start (Link to [New Project Introduction](#))

 - ❑ Austin engagement start - 2023

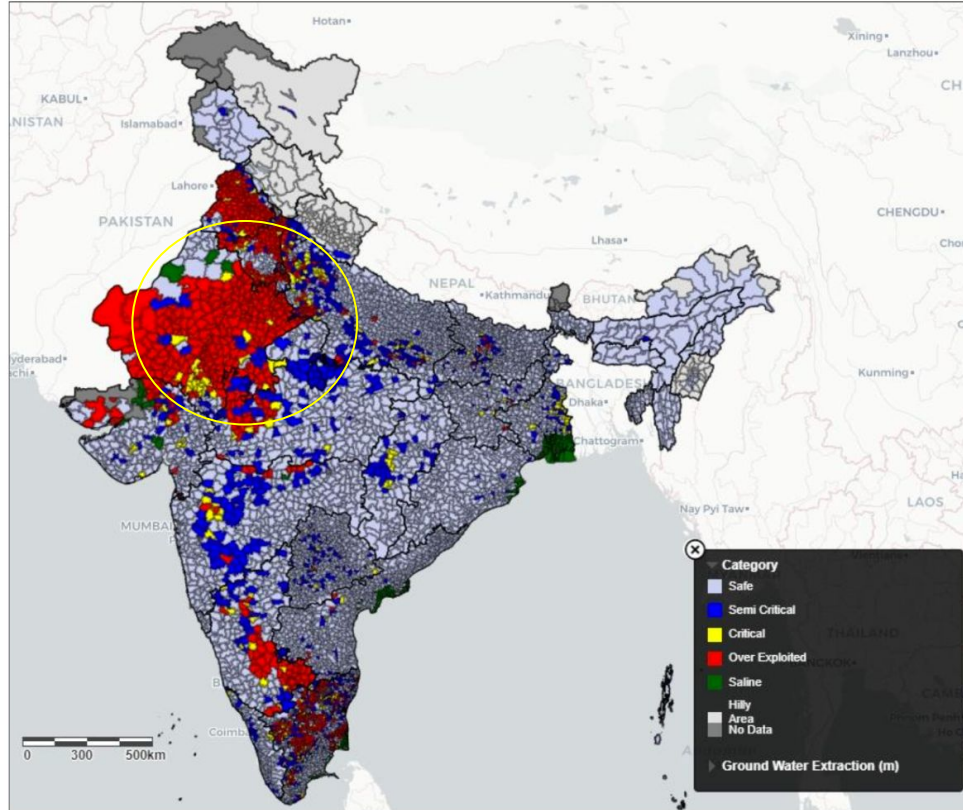
 - ❑ [Projects Page](#) - New project

Mission and Vision

- ❑ Mission of the Project Partner - Sustainable Development of Urban & rural Human and Natural Resources with long-term objective of bringing about change - physical, social and attitudinal
 - ❑ [Ted Talk](#) by Founder Mr. Farhad Contractor
 - ❑ [Every Drop Counts](#) - Stories of change - Satyamev Jayate
 - ❑ [Photos](#)

- ❑ Vision over the next 5 years
 - ❑ Conserving and restoring land, water and natural resources
 - ❑ Strengthening livelihoods of farmers and pastoralists
 - ❑ Improving access to quality water, food as well as income
 - ❑ Building local governance systems and community-level leadership
 - ❑ [Ecological Restoration and Education with Schools in Central and Eastern Rajasthan - NEW](#)

Groundwater Status across India



Central and Eastern Rajasthan

- Very poor groundwater quality and its ground water sources are overexploited
- Children in most schools today are dependent on groundwater for drinking

Over-exploited regions of Rajasthan

- Acute water scarcity
- Rural is heavily under served
- Water storage systems in schools defunct

Ecological Restoration and Education in Schools

- ❑ Based on on-ground and outreach work focussed on ecological restoration in 80 villages in Central and Eastern Rajasthan
 - ❑ Social capital, trust and goodwill a key component for reach and selection of participant schools
 - ❑ Community involvement and subsequent takeover for maintenance and well-being an essential part of the approach
- ❑ Proposal to work with students and schools in the districts of Alwar, Dausa, Bharatpur, Jaipur, Tonk and Ajmer
- ❑ Part 1 - Environmental Sustainability Education in Rural Government Schools
 - ❑ Learning and teaching around water and food systems
 - ❑ 20 secondary schools (6th and above) and senior secondary schools (9th and above) each year
 - ❑ 4000+ children benefited per year at ~ 200 children/school/year
 - ❑ 20% contribution from the school and community
- ❑ Part 2 - Ecological Restoration in Rural Government Schools
 - ❑ On-ground work to resolve water and nutrition scarcity and quality issues - students from Part 1 part of the effort
 - ❑ At least 10 secondary (6th and above) and senior secondary schools (9th and above) each year
 - ❑ 2000+ children benefited per year at ~ 200 children/school/year
 - ❑ 20% contribution from the school and community

Part 1 - Environmental Sustainability Education

- ❑ Activity and discussion based sessions with children and teachers
 - ❑ 2 main sessions, 2 follow up sessions per school
- ❑ Group-based study projects contextualized to the children's neighborhood/village
- ❑ Exposure visits to sustainable ecological restoration
 - ❑ Water and food systems work done by Sambhaav
- ❑ Modules will be developed in the local language (Hindi) to two levels
 - ❑ 6th and above, 9th and above
 - ❑ [Example modules](#)

Part 2 - Ecological Restoration

- ❑ On-ground work to resolve water and nutrition scarcity and quality issues
 - ❑ Rooftop rainwater-based recharge of groundwater sources *within* the school - borewells and handpumps
 - ❑ Repair of rainwater harvesting systems setup in some schools by the Public Health and Education Department, which are mostly defunct now
 - ❑ Setup of biodiverse-nutrition gardens (wherever water and land is available) that can provide fresh fruits and vegetables that can contribute to the mid-day meals of children
 - ❑ Recycling of greywater for reuse in the nutrition gardens
- ❑ All on-ground interventions are low in capital investment - low-cost, low-maintenance, sustainable solutions
 - ❑ Will build on existing physical assets and natural resources within the school
 - ❑ Will contribute to practice based education about ecological restoration

Project Updates

Research and Analysis

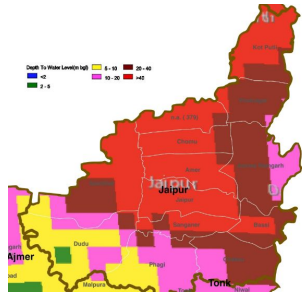
- ❑ Sambhaav used secondary data from Bhuvan's WRIS and GWIS
 - ❑ First understand the groundwater situation at a block level
 - ❑ Results verified and corroborated against the actual situation at a block level
- ❑ Results of the analysis

Outcome

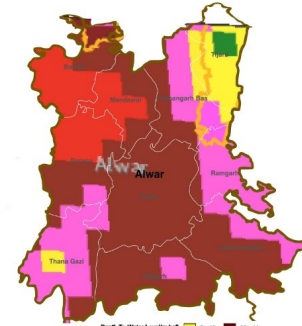
- ❑ Sambhaav zeroed in on the following blocks to start work in Year 1
 - ❑ Dausa, Rajgarh and Baswa blocks in Alwar and Dausa districts
 - ❑ Phulera, Mozmadabad and Dud blocks in Jaipur district
- ❑ Urban blocks of Jaipur district were not shortlisted as the focus of the programme is rural schools
 - ❑ Difficult to mobilize community contributions for the on-ground work in urban areas

Sambhaav - Research and Analysis

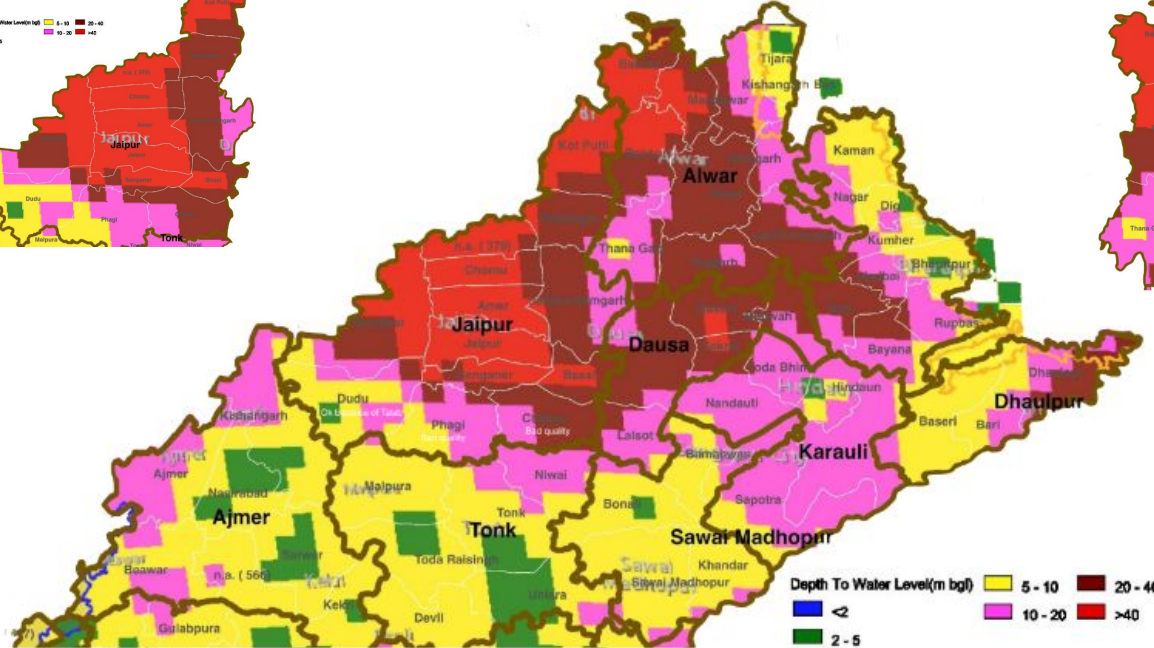
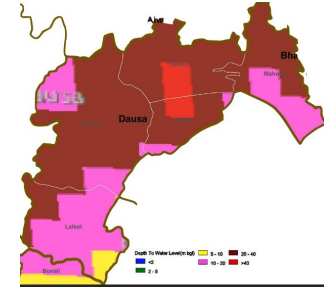
Jaipur



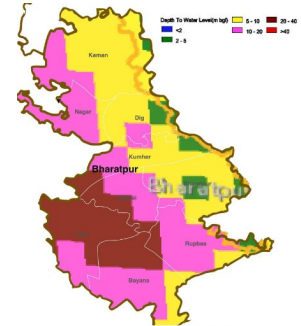
Alwar



Dausa



Bharatpur



Project Updates

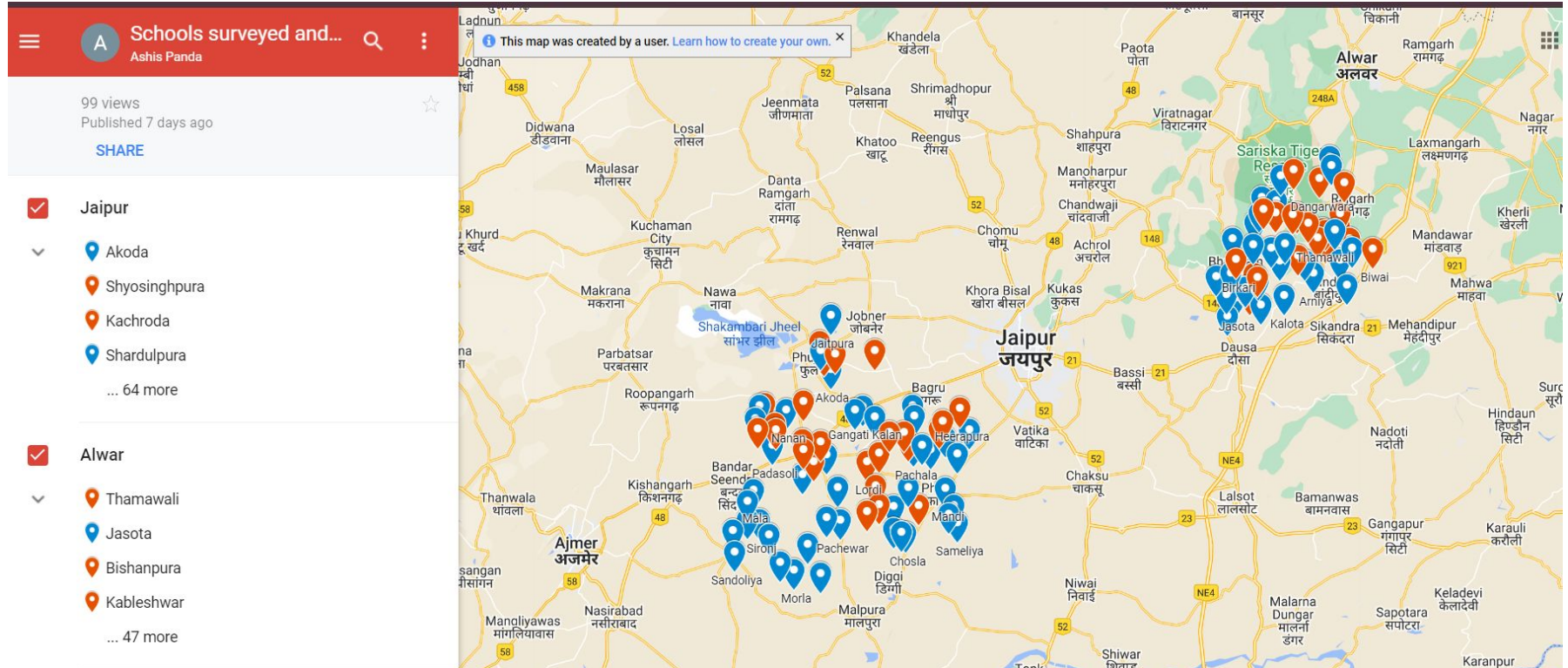
On-Ground Survey

- ❑ Sambhaav then undertook a detailed on-ground survey of the schools in the short-listed blocks
 - ❑ Verify the on-ground situation as regards water for drinking for the students
 - ❑ Initiated discussions with the schools - principals, teachers and parents
 - ❑ Understand which of the affected schools were interested to participate in the awareness and on-ground work
- ❑ Sambhaav visited a total of 116 schools in Jaipur, Dausa, Alwar and a few in Tonk and Ajmer districts

Short-listed Schools (first round)

- ❑ Based on the ground situation in terms of most dire need for drinking water and willingness of schools to participate
 - ❑ 25 schools in Dausa, Rajgarh and Baswa blocks in Alwar and Dausa districts
 - ❑ 24 schools in Phulera, Mozmadabad and Dud blocks in Jaipur district
- ❑ Sambhaav to engage with about 10-15 schools for education/ awareness work in each region (Jaipur and Alwar/Dausa)
- ❑ Sambhaav to engage with about 5-10 schools for on-ground work with the schools (Jaipur and Alwar/Dausa)

Sambhaav - School Survey/ Engagement



Project Updates

Short-listed Exposure Visit locations

- ❑ Jaipur Schools
 - ❑ Central Sheep and Wool Research Institute - native species of livestock suited to Aravalis, Thar desert, seeds/information on native fodder grasses, shrubs and trees
 - ❑ Tordi Sagar Bandh, Tonk - Traditional large-scale water harvesting and storage system
 - ❑ Palwas (Jain), Avana (Gurjar), Organic farms in Bichoon area, rainwater harvesting through tankas
 - ❑ Bhairana (Sacred grove), Dadu Paal ki Mandir - part of larger piece of land developed by the Forest Department and local communities, native forests, rainwater harvesting through check dams and tankas
 - ❑ Pahadiya (Sacred grove), Mataji ka Mandir, Pasture land development by the Panchayat, Forest development work by the Department and local communities, Rainwater harvesting through check dams, anicuts and ponds
 - ❑ Heerapura, Phagi - Pasture land development work done by the Panchayat
 - ❑ Chhaparwada Bandh, Dudu - Traditional water harvesting and storage system (large-scale)
 - ❑ Dhandholi, Itakhai, Mozmabad - Pasture land development work done by the Panchayats
- ❑ Exposure visits will be organized based on routes/locations most proximate to each set of schools in an area

Project Updates

Short-listed Exposure Visit locations

- ❑ Alwar, Dausa schools
 - ❑ Medicinal/ herbal park Dhiroda (Gola Ka Bas)
 - ❑ Nanduwali water revival - Jahaz
 - ❑ Water conservation and pasture land development - Losal Brahmanan
 - ❑ Devbani (Sacred grove) at Tilwad
 - ❑ Johad (pond) at Rampura
 - ❑ Devani (Sacred grove) at Baansrol
 - ❑ Chaubey Organic Farm at Ghevar
 - ❑ Tiwari Organic Farm at Garh Binjari
- ❑ Exposure visits will be organized based on routes/locations most proximate to each set of schools in an area



Asha
for Education

Bringing hope through education

Updates
April 2024 to May 2025



Project Updates (Work Report Updates)

Background

- ❑ New Project approved in mid-August 2023
 - ❑ Funding for Year 1 from July 2023 to March 2024
 - ❑ Funding for Year 2 from April 2024 to March 2025
- ❑ Sambhaav started work on the ground from September 2023

Team Building

- ❑ Onboarded 2 team members who agreed to work on this programme on a long-term basis
 - ❑ Manish Sharma (from Sakat, Rajgarh, Alwar)
 - ❑ Dhannaram Jat (from Savli, Dudu, Jaipur)
- ❑ Guided by senior Sambhaav team members, Chhagan Gurjar (Jaipur) and Kunjbhari Sharma (Alwar)
- ❑ Inducted into the work and the region and overall theme through exposure to past work done by Sambhaav

Project Updates (Work Report - 2024-25)

Summary

- ❑ Ecological Education and Restoration work done in 26 schools in Jaipur, Alwar and Dausa districts
- ❑ Regular follow up meetings in all 26 schools, before, during and after the activities were conducted
- ❑ Photos

Impact

- ❑ Education and On-ground work done in a total of 26 schools in Central and Eastern Rajasthan, benefiting a total of 5279 school children and 313 school staff
- ❑ 1002 children, 155 teachers and 46 parents - total 1203 people participated in 20 exposure visits covering 20 schools
- ❑ Through on-ground work within the premises of 16 schools, a total of 14.17 lakh litres of rainwater stored and 8.03 lakh litres recharged into the ground.
 - ❑ Meets 100% of drinking water and 20% of the domestic water needs of the schools
- ❑ 4 schools met their fruit and vegetable needs through the school midday meals, for 2 months of the year in winter, through the new Kitchen gardens setup.



**Field Exposure Visits as part of Ecological Education
Component of Sambhaav's Programme**





Sambhaav's Ecological Restoration Effort at Jaysinghpura - Baswa

FCRA Compliance

- ❑ Yes, valid till Jan 04, 2028
- ❑ Valid 80G/FCRA registrations

Site Visit Compliance

- ❑ In-person site visit from Padmanava Sen for background
 - ❑ Ashis Panda Fellowship (17-18 January 2017)
- ❑ Call with Project Partner on May 23, 2023
 - ❑ Attendees: Ashis (Sambhaav), Gaurav, Mohit, Ranga, Shruti, Subra
 - ❑ Total Time: 90 min
- ❑ In-person site visit by Amit Sharma, July 4, 2023 to Renwal Manji
 - ❑ Valid till July 3, 2025
 - ❑ Spent 5 hours
 - ❑ Visited 2 schools - Heerapura, Raithal and 1 village - Gulabpura
- ❑ In-person site visit by Amit Sharma on July 9, 2025
 - ❑ Visit to Alwar region for 1 day



In-person talk by Ashis Panda in Austin

- ❑ May 19, 2024 at UT from 4:30 to 6:30 pm
- ❑ Asha volunteers who attended: Alisha, Ankita, Gaurav, Mohit, Raghu, Ranga, Sowmya, Subra

Financial Health

- ❑ Audit Reports ([2023-24](#)) ([2022-23](#)) ([2021-22](#)), ([2020-21](#)), ([2019-20](#))
 - ❑ Quarterly audits being done by Sambhaav
 - ❑ 2024-25 awaited in September 2025 timeframe

- ❑ Corpus of ~ 1 CR
 - ❑ Interest income only for program expenses of Sambhaav Trust

- ❑ Pilot program with 20% from schools/villages and 80% from Asha
 - ❑ 20 schools/year for Part 1 - sustainability education
 - ❑ 10 schools/year for Part 2 - ecological restoration

- ❑ Team confident to bring in CSR in the next 3-7 years after critical mass is reached in terms of impact/schools

2024-25 Funding Partners

- ❑ Total Opex at 91L for 2024-25
 - ❑ American Jewish World Service
 - ❑ Arghyam Corpus Funds
 - ❑ Asha for Education - 20% of Sambhaav, 85% of New Project
 - ❑ British Museum
 - ❑ New Zealand Mission Fund
- ❑ Team confident to bring in CSR in the next 3-7 years after critical mass is reached in terms of impact/schools
- ❑ Past Funding Partners
 - ❑ Misereor
 - ❑ Reliance Foundation
 - ❑ Tata Trusts

Planned Sources of Funding

- ❑ New Pilot Program
 - ❑ 85% from Asha for 1st 3 years
 - ❑ 15% from local community

Funds Utilization for 2024-25

- ❑ **Year 2 Schools**
- ❑ **1.44L unutilized till March end, utilized by end of May 2025**
 - ❑ Based on actual repairs needed after observation of work completed in the preceding year
 - ❑ Amount carried over < 10%

Budget Proposal for 2025-26

- ❑ **Total Proposal for INR 24.96 lacs INR (7.5% higher than 2024-25 at 23.22 lacs INR)**
 - ❑ Program Implementation at INR 16.17 lacs
 - ❑ Part 1 - Sustainability Education at INR 4.6 lacs, 20 schools
 - ❑ Part 2 - Ecological Restoration at INR 11.55 lacs, 10+ schools (based on 50k-1 lac actuals/ school)
 - ❑ 75% Asha, 25% community
 - ❑ Program Coordination at INR 7.62 lacs
 - ❑ Two full-time junior coordinators for Central and Eastern Rajasthan at 15k INR/month each
 - ❑ Program travel at 6k INR/month each
 - ❑ Part-time senior coordinator for Central and Eastern Rajasthan at 10k INR/month
 - ❑ Program travel at 3k INR/month
 - ❑ Program Administration at INR 1.15 lac
- ❑ **Total Budget for 2025-26: INR 24.96 lacs or 29072 USD at 85 INR/USD**

Budget Proposal for 2025-26

Sambhaav Trust - Annual Budget for 2025-26						
Sl No	Description	Breakup	Year 1 Jul 2023 - Mar 2024	Year 2 Apr 2024 - Mar 2025	Year 3 Budget Apr 2025 - Mar 2026	Remarks
1	Programme Implementation		1400000	1505000	1617875	7.5% increase Year on Year
1.1	Environmental sustainability education work in Schools	Rs. 20000 / school * 20 schools per year	400000	430000	462250	This includes: cost of refreshments and stationery during classroom sessions & travel and refreshments during outdoor projects and exposure visits.
1.2	On-ground ecological restoration work in Schools	Rs. 100000 / school * 10 schools per year	1000000	1075000	1155625	This includes: cost of repair of rainwater harvesting or greywater recycling systems including repair of rainwater or greywater conveyance systems, filters and storage tanks & Open-pollinated seeds and saplings of vegetables and fruits, tank silt and compost for setting up biodiverse-nutrition gardens. This excludes 25% contribution from participant schools.
2	Programme Coordination		495000	709500	762713	
2.1	Programme Travel	Rs. 15000 / month * 12 months per year	135000	193500	208013	6000/- month * 2 Junior Programme coordinators + 3000/month * 1 Senior Programme coordinator
2.2	Programme Team Salaries	Rs. 40000 / month * 12 months per year	360000	516000	554700	This includes full-time salary of Junior Programme Coordinators for Eastern and Central Rajasthan and part-time salary of Senior Programme Coordinator. 15000/- per month * 2 full-time Junior Programme Coordinators (Manish Sharma, Dhannaram Jat) and 10000/- per month * 1 part-time Senior Programme Coordinator (Kunjbihari Sharma). Yearly increase not accounted for, in these numbers. Note that cost of Executive Secretary though incurred, is not included in this. Chhagan Gurjar - Part-time Senior Programme Coordinator will not be working with Sambhaav from Jul 2024 onwards.
3	Programme Administration		100000	107500	115563	

Total Budget for 2025-26: INR 24.96 Lacs

Plan for 2025-26
Allocation: 27528 USD
Request: 24.96 lacs
29072 USD
Year 3

This is for Year 3 schools only
All of Year 2 utilized with -65k deficit for
Year 2 schools

Budget Proposal for 2025-26

Total Budget for 2025-26: INR 24.96 Lacs

Sambhaav Trust - Annual Budget for 2025-26						
SI No	Description	Breakup	Year 1 Jul 2023 - Mar 2024	Year 2 Apr 2024 - Mar 2025	Year 3 Budget Apr 2025 - Mar 2026	Remarks
3.1	Programme Administration	Part contribution towards Sambhaav's organisational overheads that help to administer the programme such as Office assistant, Office accountant, Postage and station, Electricity and Telephone, Audit fees, Municipal taxes, Charity commissioner fees etc	100000	107500	115563	
	Total Budget (Rs.)		1995000	2322000	2496150	
		Rs. per child cost	499	581	624	
		Total children benefited	4000	4000	4000	Children in 50% of the schools which will have both Education and On-ground work will benefit twice.

Year 2 : Avg. restoration cost/ school 75000 INR Sambhaav at 75%, School and community at 25%

Year 2 : Avg. education cost/ school 20000 INR

of schools engaged for restoration depending on community involvement and budgets for each school based on actual intervention needed

Plan for 2025-26
Allocation: 27528 USD
Request: 24.96 lacs
29072 USD
Year 3

This is for Year 3 schools only
All of Year 2 utilized with -65k deficit

Chapter Vote

- ☐ Support for INR 24.96 lacs for the period from April 2025 to March 2026 (approx. 29k USD) for Sambhaav's ecological education and restoration in rural government schools.
 - ☐ Yes - 6 - Ankita, Mohit, Ranga, Shruti, Subra and Kaayva (On-line)
 - ☐ No - 0
 - ☐ Abstain - 0

- ☐ Does the chapter approve first half-yearly disbursement of INR 12.48 lacs towards Sambhaav Trust for April 2025 to March 2026.
 - ☐ Yes

Summary

- ❑ New incubation project by Sambhaav to work with highly vulnerable schools
- ❑ Two components of ecological education and restoration
- ❑ Benefits 20+ government schools and 4000+ children and families each year

Chapter Checklist

If all goes well in the 1st year, expected to go through normal projects funding cycle of 7 years subject to Projects Model

	Year 1	Year 2	Year 3	Year 4	Year 5	Year 6	Year 7
FCRA Validity	Y	Y	Y				
Budget and Proposal	Y	Y	Y				
Annual Report	Y	Y	Y				
Audit Report	Y	Y					
Beneficiaries and Staff List	Y	Y	Y				
Site Visits	Y	Y	Y				
Financial Analysis	Y	Y					
Funding Partners	Y	Y	Y				
Corpus Fund Initiatives	Y	Y	Y				
% OPEX (Program)	85%	85%					
% OPEX (Total)	20%	24%					
WCR	0.1						

References on Water Conservation

- ❑ [TED Talk](#) by Anupam Mishra - The ancient ingenuity of water harvesting
- ❑ Rajasthan ki Rajat Boondein ([Book](#) by Anupam Mishra)
- ❑ [Anupam Mishra](#), Chairperson and Trustee, Sambhaav from 2004 till he passed away in 2016.



Asha

for Education

Bringing hope through education

Fellowship Ashis Panda Updates (Year 1)
April 2024 to May 2025

Annual Review for 2024-25 and
Budget Proposal for 2025-26 (Year 2/X)

Asha Austin
June 02, 2025

Fellowship Updates (Annual Report - 2024-25)

High-Level

- ❑ Building Native Seed Conservation and agrobiodiversity networks in India ([More information](#))
- ❑ Conducted a course on Agroecology for 25 participants from across India, in partnership with Welthungerhilfe and other partners from across India ([More information](#))
- ❑ Supported the Rajasthan Natural Farming Coalition in organising online workshops on marketing of organic/naturally-grown foods for members from the National Coalition for Natural Farming (<https://nfcoalition.in/>)
- ❑ Supported Sambhaav - building surface water based agricultural and ground water systems for SC/STs in Barmer and Jaisalmer districts, documentation of indigenous knowledge systems in Jaisalmer and Beri districts, transitioning 400 farmers to agroecology in Alwar and Jaisalmer districts

❑ [Photos](#)

FCRA Compliance

- ❑ Yes, valid till Jan 04, 2028
- ❑ Valid 80G/FCRA registrations

Site Visit Compliance

- ❑ In-person site visit from Padmanava Sen for background
 - ❑ Ashis Panda Fellowship (17-18 January 2017)
- ❑ Call with Project Partner on May 23, 2023
 - ❑ Attendees: Ashis (Sambhaav), Gaurav, Mohit, Ranga, Shruti, Subra
 - ❑ Total Time: 90 min
- ❑ In-person site visit by Amit Sharma, July 4, 2023 to Renwal Manji
 - ❑ Valid till July 3, 2025
 - ❑ Spent 5 hours
 - ❑ Visited 2 schools - Heerapura, Raithal and 1 village - Gulabpura
- ❑ In-person site visit by Amit Sharma on July 9, 2025
 - ❑ 1 day visit to Alwar region and schools



Chapter - Fellow Engagements

- ❑ In-person talk by Ashis at UT Austin in Austin
 - ❑ May 19, 2024 at UT from 4:30 to 6:30 pm
 - ❑ Asha volunteers who attended: Alisha, Ankita, Gaurav, Mohit, Raghu, Ranga, Sowmya, Subra

- ❑ Chapter Virtual Visit
 - ❑ June 9, 2025 from 9 to 10:30 pm Austin
 - ❑ Asha volunteers who attended: Ananya, Kaavya, Mohit, Ranga, Shruti, Sowmya, Subhangi, Subra
 - ❑ Overview of Sambhaav Program for 2024-25
 - ❑ Overview of Fellowship efforts for 2024-25

Funds Utilization for 2024-25

ASHA for Education – Ashis Panda Fellowship

2024-25		
Opening Balance	-	as on 01/04/2024
Grant Received	480,000.00	
Bank Interest received	7,037.00	
Total available balance	487,037.00	
Utilization / Expenses	480,000.00	
Closing Balance	7,037.00	as on 31/03/2025

Budget Proposal for 2025-26

- Honorarium for Fellowship at INR 40K p.m. for INR 4.8L for 2025-26

Chapter Vote

- ☐ Support for INR 4.8 lacs for the period from April 2025 to March 2026 for Fellowship Ashis Panda
 - ☐ Yes - 6 - Ankita, Mohit, Ranga, Shruti, Subra and Kaayva (On-line)
 - ☐ No - 0
 - ☐ Abstain - 0

Chapter Checklist

	Year 1	Year 2	Year 3	Year 4	Year 5	Year 6	Year 7
FCRA Validity	Y	Y					
Budget and Proposal	Y	Y					
Annual Report	Y	Y					
Site Visits	Y	Y					



Asha
for Education

Bringing hope through education

Thank You
Asha Austin