

# Maitri Shaala

## Renewal June 2025

Activity Based  
Learning for Tribal  
Children of Melghat



# Budget at a glance



| Budget Summary 2025-2026 - Primary School (150 children) and Jarida Extension (100 Children) |  |           |  |
|--|--|-----------|--|
| 1  | Infrastructure/ Set up cost                  | 1,70,000  | Books for libraries 7 schools (Primary)  |
| 2  | Administrative Cost                          | 36,000    | Office, accounting expenses, electricity, communication  |
| 3  | Primary School - Student/Learning Expenses   | 10,18,500 | Supplemental teachers' salary, Student material, Diwali Melava, workshops, travel              |
| 4  | Primary School – Extension Program at Jarida | 2,82,000  | Monthly Sessions Material Cost, Science Workshop & Competition, Local Travel, Food & Logistics |
|  |  | 15,06,500 |  |

- 2025-26 Budget higher than 2024-25 (on the next slide) plus 10% inflation (13,54100) due to
  - One time cost books, laptop, printer (INR 1,70,000) which will not be considered for inflation raise next year
  - Primary school student expenses are higher because of a) additional tribal coordinator salary (in 2024-25 it was one while in 2025-26 it is two) b) tribal executor salary increased from INR 3650 to INR 5000.00 per month but it compensated by lower expenses for Primary School – Extension Program at Jarida
- As a steward, one time expense looks reasonable to me and can be voted in

# Budget at a glance



| Budget Summary 2024-2025 - Primary School (150 children) and Jarida Extension (100 Children) |  |           |  |
|--|--|-----------|--|
| 1  | Infrastructure/ Set up cost                  | 1,05,000  | Books for libraries 7 schools (Primary)  |
| 2  | Administrative Cost                          | 38,400    | Office, accounting expenses, electricity, communication  |
| 3  | Primary School - Student/Learning Expenses   | 7,47,600  | Supplemental teachers' salary, Student material, Diwali Melava, workshops, travel              |
| 4  | Primary School – Extension Program at Jarida | 3,40,000  | Monthly Sessions Material Cost, Science Workshop & Competition, Local Travel, Food & Logistics |
|  |  | 12,31,000 |  |

# Maitri Shaala at Melghat



- Geography : Tribal villages of Melghat on border of Maharashtra and Madhya Pradesh. Satpuda Mountain Range.
- Demographics : Tribal Korku (85%) Madia, Gond (15%)
- Site Visit :
  - Projected next visit: Dec 2025
  - Virtual: In chapter meeting Sept 2024, May 2022
  - In person: January 1-4, 2020 by Medha Joshi.

# Melghat Problem

## **Problem : Severe Malnutrition causing high mortality among children and women**

- Grassroot NGO Melghat Mitra (Maitri) started its work around 28 years back to address the problem.
- Realized that health issue due to lack of resources which is because of extreme poverty. Extreme poverty because of limited opportunities which is due to lack of education and isolation from the outside world. A vicious circle.
- Other issues identified
  - Lack of awareness regarding health, hygiene, sanitation
  - Severe weather conditions, primitive farming methods, limited crop and crop yield
  - Girls in poor health getting married as early as ages 11 to 16 and having children
- Decided to take a holistic approach. To eradicate the malnourishment from the root, a consistent and long term approach was required.

## **Solution : Education, empowerment through Education as one of the long term solutions**

- ❖ Melghat Mitra (Maitri) works for community building, agriculture, healthcare, and education (Maitri Shaala)
  - Started work in Melghat for malnutrition 25 years back initially through various health initiatives
  - Maitri Shaala started in 2012 which is a **supplementary school and works along with Government school** with objective of improving quality of primary and secondary education.





# Glimpses of Melghat



# Melghat Mitra Presence

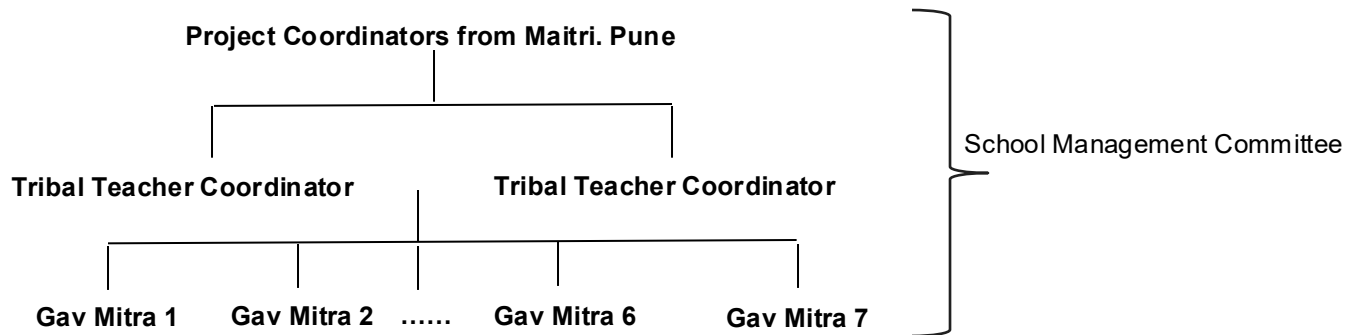


- Melghat Mitra (Maitri) active in north eastern region near Madhya Pradesh border
- Education efforts in 7 villages for primary schools and 1 Ashramshala, health efforts in around 15 villages (pink and yellow) out of 320 villages around Melghat Tiger reserve



## ❖ Maitri Shaala (Primary)

- Started with direct intervention : 100 day residential school with 40 dropout children. Enrolled them back in school in 2012
- Bottom up approach. Supplementary school, trying to improve existing government school system.
- Based on principal of **active participation** from the tribal community
- Works with three key elements : Maitri project **coordinators**, **tribal coordinators** and **tribal executors** called Gav Mitra (friends of the village)



## ❖ Obstacles to Education in Melghat

- Tribal people having their own language (Korku), customs, not trustful of outsiders
- Low literacy, parents not educated, apathy towards education
- High dropout rate : children busy in farm work, herding cattle, collecting jungle products, looking after younger siblings
- Government schools but teachers unmotivated, not accountable, absent many times
- Vicious circle : children absent so teachers absent....goes on
- Government Functionaries not actively involved in the process.
- Government funds not distributed completely and in time because of malpractices in the bureaucracy.

## ❖ Maitri Shaala (Primary)

- Nearly 150 children ( currently 66 girls, 69 boys) in 7 villages
- Tribal coordinators and Gav mitra :
  - Counsel parents, spread awareness, participate in School Management Committees (SMC)
  - Motivate children by songs, stories, bilingual (Korku-Marathi) language games, activity based learning
  - Help with their homework : basic reading, writing, science and mathematical skills
- Efforts to make government ZP schools more efficient and accountable
  - School Management Committee (SMC) with all stakeholders representation from school, village head (“Sarpanch”), Maitri coordinator, tribal coordinators, and parents.
  - Because of local representation understand local needs : festivals, crop season, weekly bazaar day
- Extension Program at Jarida AshramShala for secondary school students.

# Maitri Shaala (Primary) In a Nutshell



## Activity Based Learning

- Book Reading, Picture Reading, Story Telling
- Cards, Pictures, Charts, Games for learning
- Craft Activities, Puppets, Drama, Action songs

## Audio Visual Assistance

- Short films, animated stories for children
- Training of local supplementary teachers & coordinators
- Discussions with SMC with concrete plans and results

## Program Structure

- Daily 2 hours before school hours by Gav Mitra
- At least 1 outdoor activity per month in village
- Volunteer experts visit 1 week per month
- Review, SMC Meetings by local coordinator

# Guiding Metrics



- ✓ 100% enrollment and attendance in primary school with close to zero dropout rate
- ❖ Majority of students adept with reading, writing, mathematical skills measured by ZP school results after primary school (independent evaluation in progress)
- ✓ Number of students going to secondary school (100%)
- ✓ Number of students completing primary school (100%)
- ❖ Number of students going for higher education after secondary school (Data provided in subsequent sheets)
- ❖ Number of students utilizing education for vocational training, getting jobs, earning livelihood (Tracking to be done this year onwards)

**In nutshell, Melghat education quality and metrics on par with good rural area education quality and metrics**



# Students Data



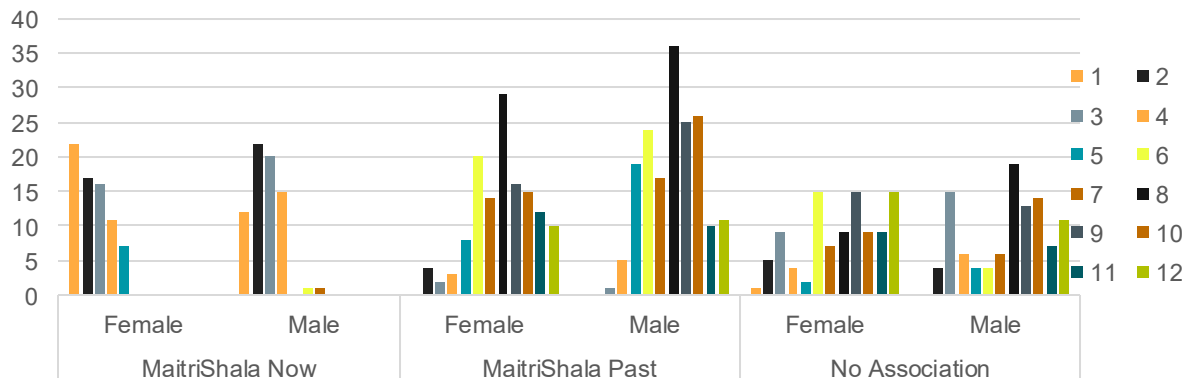
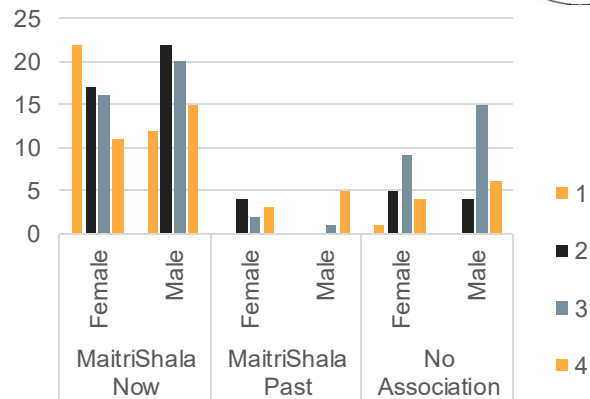
May 2024 Record of all students in our 7 villages.

| Student Count        | Class/<br>Standard |    |    |    |    |    |    |    |    |    |    |    |       |
|----------------------|--------------------|----|----|----|----|----|----|----|----|----|----|----|-------|
| Village and Gender ↓ | 1                  | 2  | 3  | 4  | 5  | 6  | 7  | 8  | 9  | 10 | 11 | 12 | Total |
| Bhandum              | 8                  | 6  | 9  | 3  | 9  | 11 | 9  | 15 | 10 | 7  | 2  | 3  | 92    |
| Female               | 4                  | 2  | 4  |    | 3  | 6  | 6  | 9  | 3  | 2  | 1  | 1  | 41    |
| Male                 | 4                  | 4  | 5  | 3  | 6  | 5  | 3  | 6  | 7  | 5  | 1  | 2  | 51    |
| Chilati              |                    | 10 | 11 | 2  | 3  | 3  | 9  | 6  | 12 | 9  | 2  | 7  | 74    |
| Female               |                    | 3  | 1  | 1  | 1  | 3  | 5  | 4  | 7  | 3  | 1  | 1  | 30    |
| Male                 |                    | 7  | 10 | 1  | 2  |    | 4  | 2  | 5  | 6  | 1  | 6  | 44    |
| KaranjKheda          |                    | 3  | 7  | 4  |    | 9  | 9  | 19 | 10 | 7  | 6  | 8  | 82    |
| Female               |                    |    | 4  |    |    | 4  | 2  | 5  | 5  | 3  | 4  | 7  | 34    |
| Male                 |                    | 3  | 3  | 4  |    | 5  | 7  | 14 | 5  | 4  | 2  | 1  | 48    |
| Salita               |                    | 6  | 9  | 8  | 8  | 5  | 7  | 14 | 7  | 9  | 3  | 11 | 87    |
| Female               |                    | 5  | 5  | 4  | 5  | 3  | 4  | 5  | 3  | 5  | 2  | 4  | 45    |
| Male                 |                    | 1  | 4  | 4  | 3  | 2  | 3  | 9  | 4  | 4  | 1  | 7  | 42    |
| Simori Big Dhana     | 14                 | 13 | 13 | 11 | 10 | 15 | 7  | 8  | 13 | 10 | 13 | 6  | 133   |
| Female               | 10                 | 7  | 5  | 3  | 5  | 7  | 2  | 1  | 5  | 3  | 7  | 3  | 58    |
| Male                 | 4                  | 6  | 8  | 8  | 5  | 8  | 5  | 7  | 8  | 7  | 6  | 3  | 75    |
| Simori Small Dhana   |                    | 1  | 2  | 6  | 4  | 9  | 1  | 13 | 6  | 3  | 7  | 7  | 59    |
| Female               |                    | 1  | 1  | 3  | 1  | 4  | 1  | 6  | 5  | 1  | 3  | 6  | 32    |
| Male                 |                    |    | 1  | 3  | 3  | 5  |    | 7  | 1  | 2  | 4  | 1  | 27    |
| Sumita               | 13                 | 13 | 12 | 10 | 6  | 12 | 3  | 18 | 11 | 19 | 5  | 5  | 127   |
| Female               | 9                  | 8  | 7  | 7  | 2  | 8  | 1  | 8  | 3  | 7  | 3  | 3  | 66    |
| Male                 | 4                  | 5  | 5  | 3  | 4  | 4  | 2  | 10 | 8  | 12 | 2  | 2  | 61    |
| Total                | 35                 | 52 | 63 | 44 | 40 | 64 | 45 | 93 | 69 | 64 | 38 | 47 | 654   |

# Metrics : Association with Maitri Shaala



| Student Count -->       | Class     |           |           |           |           |           |           |           |           |           |           |           |              |
|-------------------------|-----------|-----------|-----------|-----------|-----------|-----------|-----------|-----------|-----------|-----------|-----------|-----------|--------------|
| <b>Student Category</b> | <b>1</b>  | <b>2</b>  | <b>3</b>  | <b>4</b>  | <b>5</b>  | <b>6</b>  | <b>7</b>  | <b>8</b>  | <b>9</b>  | <b>10</b> | <b>11</b> | <b>12</b> | <b>Total</b> |
| <b>MaitriShala Now</b>  | 34        | 39        | 36        | 26        | 7         | 1         | 1         |           |           |           |           |           | 144          |
| Female                  | 22        | 17        | 16        | 11        | 7         |           |           |           |           |           |           |           | 73           |
| Male                    | 12        | 22        | 20        | 15        |           | 1         | 1         |           |           |           |           |           | 71           |
| <b>MaitriShala Past</b> |           | 4         | 3         | 8         | 27        | 44        | 31        | 65        | 41        | 41        | 22        | 21        | 307          |
| Female                  |           | 4         | 2         | 3         | 8         | 20        | 14        | 29        | 16        | 15        | 12        | 10        | 133          |
| Male                    |           |           | 1         | 5         | 19        | 24        | 17        | 36        | 25        | 26        | 10        | 11        | 174          |
| <b>No Association</b>   | 1         | 9         | 24        | 10        | 6         | 19        | 13        | 28        | 28        | 23        | 16        | 26        | 203          |
| Female                  | 1         | 5         | 9         | 4         | 2         | 15        | 7         | 9         | 15        | 9         | 9         | 15        | 100          |
| Male                    |           | 4         | 15        | 6         | 4         | 4         | 6         | 19        | 13        | 14        | 7         | 11        | 103          |
| <b>Total</b>            | <b>35</b> | <b>52</b> | <b>63</b> | <b>44</b> | <b>40</b> | <b>64</b> | <b>45</b> | <b>93</b> | <b>69</b> | <b>64</b> | <b>38</b> | <b>47</b> | <b>654</b>   |



↑ Only Primary Level total students 194 from 7 villages

'Associated with Maitri Shaala' means Student is Part of our program now or earlier.

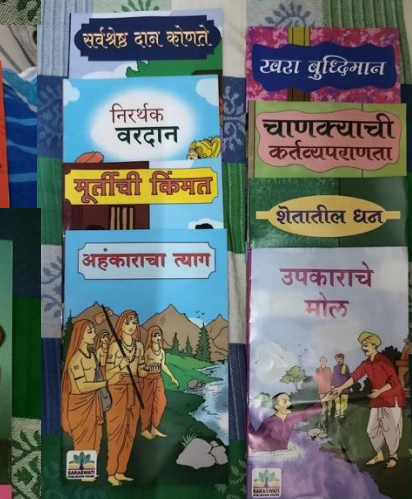
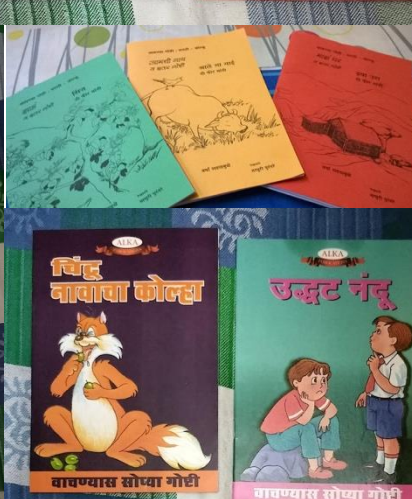
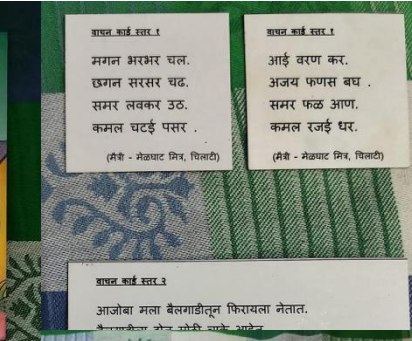
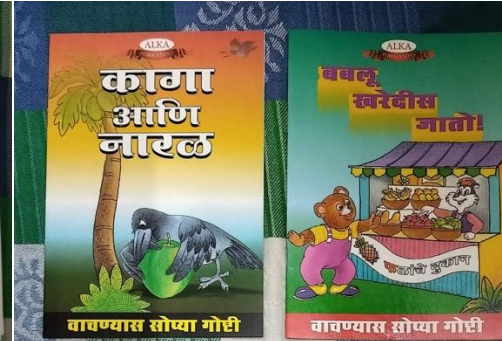
← All (Primary, Secondary & Higher Secondary), total students 654 from 7 villages













# Maitri Shala, Jarida Extension



- ✓ After Primary schooling, children go to various Ashram Schools.
- ✓ June 2023 to March 2024, Maitri Shala started its extension program to Jarida Ashramshala
  - ❖ with purpose to encourage students' creativity and curiosity
  - ❖ Provided support to one batch of students of 8<sup>th</sup> standard for various subjects like science, maths, languages, history etc.
  - ❖ Science workshop and projects competition was held in Dec 2023 and students from 3 Ashram Shala participated in same.
- ✓ Number of students - 100
- ✓ Number of sessions – 10 in a year
- ✓ Same pattern to be continued every year till this batch of students complete their 12<sup>th</sup> standard.

# Maitri Shaala Jarida Extension



## Jarida Program Staructure

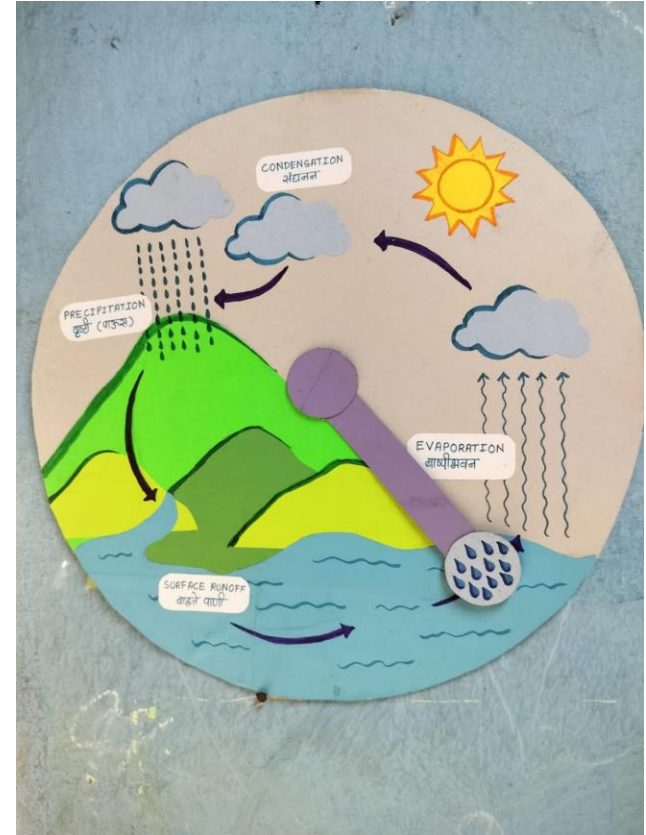
- Batch of 5 volunteers every month for 5 days
- Volunteer to conduct theme-based sessions
- Science workshop and projects competition

## Session Themes

- Observation skills, Critical thinking, Awareness
- Reading & writing abilities
- History, Maths, Science & Technology

## Various Tools

- Hands-on activities, Model building,
- Exchanging experiences, Games
- Documentaries, Videos
- Books Library for the children





# Jarida last year Photos





# Jarida last year Photos





# Maitri Shaala Budget 2025-2026



| Budget Summary - Primary School (150 children) and Jarida Extension (100 Children) |  |           |  |
|--|--|-----------|--|
| 1  | Infrastructure/ Set up cost                  | 1,70,000  | Books for libraries 7 schools (Primary)  |
| 2  | Administrative Cost                          | 36,000    | Office, accounting expenses, electricity, communication  |
| 3  | Primary School - Student/Learning Expenses   | 10,18,500 | Supplemental teachers' salary, Student material, Diwali Melava, workshops, travel              |
| 4  | Primary School – Extension Program at Jarida | 2,82,000  | Monthly Sessions Material Cost, Science Workshop & Competition, Local Travel, Food & Logistics |
|  |  | 15,06,500 |  |

# Maitri Shaala Budget 2024-2025



| 1. | One time cost         |          |           | Total    | Comment  |
|----|-----------------------|----------|-----------|----------|--|
|    | New Books for Library | 1,05,000 | 7 schools | 1,05,000 | Addition of books for the library in 7 schools.            |
|    | Printer               | 25,000   |           | 25,000   | For student worksheets, activity sheets etc and office use |
|    | Laptop                | 40,000   |           | 40,000   | For office use   |
|    |                       |          |           | 1,70,000 |  |

# Maitri Shaala Budget 2024-2025

| 2.                         | Administrative Cost  |                     | Total  | Comment  |
|----------------------------|--|---------------------|--------|--|
| Administration and Support |  |                     |        |  |
|                            | Electricity  | 12 months           | 6,000  | Electricity required for illumination, projector usage, water pumping etc. |
|                            | Phone, Internet & Communication                              | 12 months           | 7,200  | Communication between Chilati and Villages and to Maitri's Pune office     |
|                            | Printing, Stationary, Receipt books etc.                     | 12 months           | 6,000  | office material  |
|                            | Accounting/ Record Keeping/ Office Work                      | 12 month (1 person) | 7,200  | Accounts & Admin work  |
|                            | Management at Chilati during Meetings, Workshops (Trainings) | 12 months           | 9,600  | Chilati is main center where workshops, meetings, trainings are conducted  |
|                            |  |                     | 36,000 |  |

# Maitri Shaala Budget 2024-2025



| 3. | Primary School Student/Learning Expenses                       |   | Total     | Comment   |
|----|--|---|-----------|---|
|    | Study Worksheets, Craft Activity sheets, Books, Games etc      | 150*12<br>(40 INR per student/month)              | 72,000    | Monthly learning activities which are conducted by Gav Mitra  |
|    | Diwali Anand Melava Craft & Activity Material                  | 150 students                                      | 30,000    | Diwali Anand Melva Material for Craft activities, Drama, Songs, Experiments   |
|    | Diwali Anand Melava (2 snacks, 1 lunch for 4 days)             | 150*4<br>students days                            | 45,000    | This is 4 day workshop and get together that includes breakfast, lunch, evening snacks for all 150 children.        |
|    | Travel (Coordinators, Gav Mitra, Training Resource Persons)    | 1 visit per month                                 | 96,000    | Travel from Villages to Chilati and vice versa. Average 1visit per month approximately 10 persons                   |
|    | Local Coordinators salary (Primary schools & Jarida Extension) | 12 months<br>(2 person)<br>12000 per person/month | 2,88,000  | Salary for Tribal Project Coordinator One for Primary Schools and One for Ashramshala i.e. Jarida Extension program |
|    | Local Teachers salary  | 12 months<br>(7 persons)<br>5000 per person/month | 4,20,000  | Gav Mitra for 7 villages  |
|    |  |   | 10,18,500 |   |

# Maitri Shaala Budget 2024-2025



| 4. | Primary School Extension Program at Jarida |                       | Total    | Comment  |
|----|--|-----------------------|----------|--|
|    | Monthly Material Cost                      | 100*10 student months | 25,000   | Monthly learning activities which are conducted by volunteers at Jarida Ashram Shala |
|    | Local Travel Volunteers & Resource Persons | 10 sessions a year    | 95,000   | Travel of Volunteers & resource Persons from main center (Chilati) to Jarida         |
|    | Science Projects Workshop & Competition    | 1 time 100 students   | 1,30,000 | This is 3 day workshop for science projects and competition across Ashar Shalas      |
|    | Science Workshop Food & logistics          | 1 time                | 32,000   | Travel of Students & Resource Persons from Ashram Shala/ Chilati to Jarida           |
|    |  |                       | 2,82,000 |  |

## Glimpses of in person Site Visit 2020



# Chilati Village



# Karanjkheda Village school





# Sumita Village school

