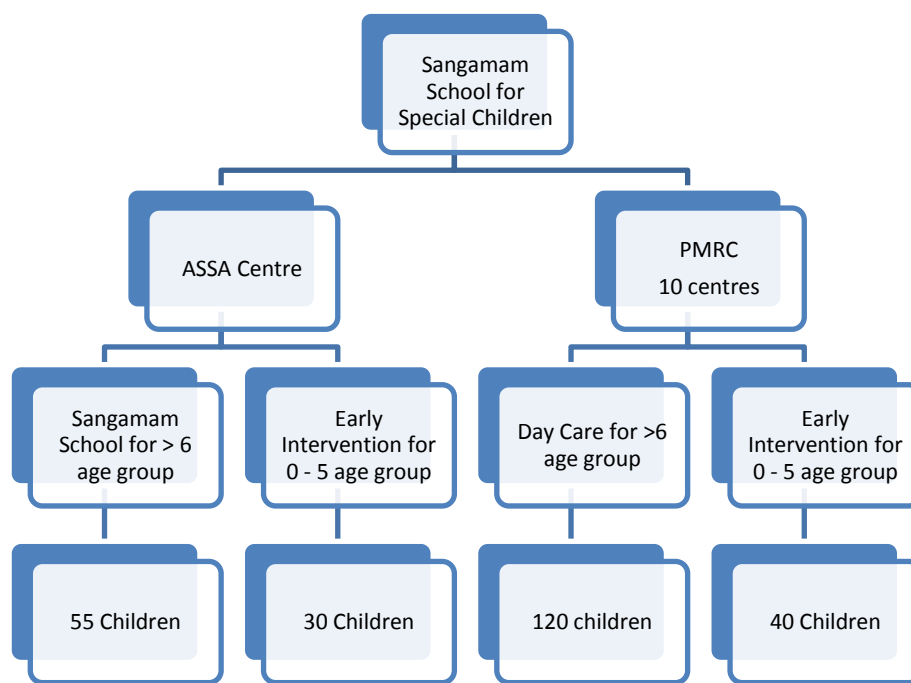


REPORT ON SANGAMAM SCHOOL ACTIVITIES FOR THE YEAR 2012-13

Sangamam School has been running very successfully during the year 2012-13 with the help and support of Asha for Education, U.S.A. and other like minded supporters of Amar Seva Sangam. The Centre has expanded and improved and has taken up early intervention activities as well for new born children with developmental delays. A sensory integration unit has been set up and a new building has been constructed exclusively for this purpose with the help of Handicare International, Canada. More than 200 children have been identified in different villages and about 30 children are registered for early intervention. Early intervention is the programme for 0 to 5 age group.

About 35 children have been promoted for integration with the PMRC supported by Amar Seva Sangam. PMRC is a community based initiative of Amar Seva Sangam to provide continuity of rehabilitation and sustainability of services. The concept is to involve the parents by forming associations of them in small groups at local level and provide rehabilitation and special education to run the day care school for special children. There are about 10 PMRCs promoted by Amar Seva Sangam so far and about 120 to 130 are benefitted. In this way not only continuity of rehabilitation is maintained but also involving care givers and security net for such children are ensured even after the period of their parents.



The Early Intervention program was established in October 2012 and we look forward to your continued support for Early Intervention Initiative of Sangamam School of Amar Seva Sangam. The project planner for 2013-14 and Budget for Early Intervention is also enclosed. The actual expenditure for Sangamam School 2012-13 and the Budget for 2013-14 can be seen below.

Sangamam School		
	Actuals 12-13	Budget 13-14
SSSC Child. Appliances & Aids	4,707.00	218,000.00
SSSC Child. Food Exps.	134,200.00	
SSSC Child. Milk Exps.	21,075.00	
SSSC Children Training (Shop)	-1,578.00	
SSSC Child. Training Exps.	71,112.00	
Salary to SSSC	1,428,030.00	1,200,000
SSSC Admin. Exps.	46,337.50	39,000
SSSC Electricity	15,885.00	19,000
SSSC Medical Exp.	13,652.00	14,000
SSSC Uniform	40,410.00	10,500
SSSC Van Pickup	358,223.00	464,000
Total Sangamam School	2,132,053.50	1,964,500.00

Early Intervention Programme		
	Actuals 12-13	Budget 13-14
EI Staff Salary		2,172,000.00
Parent's sensitization workshop about the importance of EI.		20,000.00
Awareness to women and SHGs of women and PWDs.		10,000.00
Training to CRWs and PMRC teachers.		12,000.00
New born screening and assessment camps in the project area.		16,000.00
Parents training (both parent) 2 days each x 5 disability = 10 days		20,000.00
Medical Referral and surgical care		50,000.00
Aids and appliances		25,000.00
Documentations		65,000.00
Total Early Intervention		2,390,000.00
Grand Total		4,354,500.00

Activity photos for the year 2012-13



We would like you to support the new Early Intervention also.

S.Sankara Raman

Hon. Secretary

Amar Seva Sangam

7-104B, Sulochana Gardens

Tenkasi Road

Ayikudy

Ph: 04633 – 267170, 267317

Mob: 9944454170, 9361011585

Website: www.amarseva.org

Encl.:

Annexure 1 project planner of Early Intervention Programme